

Large-scale Multi Domain Leukemia Dataset for the White Blood Cells Detection with Morphological Attributes for Explainability: Supplemental Document

No Author Given

No Institute Given

Table 1: LeukemiaAttri dataset details with its multi-domain subsets

Sr. #	Dataset Name	Microscope	Resolution	Camera	Image Count	WBC Count	Artifacts
1	H_100x_C1	OlympusCX23	100x	Honor 9X lite	2.4k	7.8k	2.5k
2	H_100x_C2	OlympusCX23	100x	HD1500T	2.4k	7.8k	2.5k
3	H_40x_C1	OlympusCX23	40x	Honor 9X lite	2.4k	7.8k	2.5k
4	H_40x_C2	OlympusCX23	40x	HD1500T	2.4k	7.8k	2.5k
5	H_10x_C1	OlympusCX23	10x	Honor 9X lite	2.4k	7.8k	2.5k
6	H_10x_C2	OlympusCX23	10x	HD1500T	2.4k	7.8k	2.5k
7	L_100x_C1	XSZ_107BN	100x	Honor 9X lite	2.4k	4.8k	1.1k
8	L_100x_C2	XSZ_107BN	100x	ZZCAT-5MP	2.4k	4.8k	1.1k
9	L_40x_C1	XSZ_107BN	40x	Honor 9X lite	2.4k	7.8k	2.5k
10	L_40x_C2	XSZ_107BN	40x	ZZCAT-5MP	2.4k	7.8k	2.5k
11	L_10x_C1	XSZ_107BN	10x	Honor 9X lite	2.4k	7.8k	2.5k
12	L_10x_C2	XSZ_107BN	10x	ZZCAT-5MP	2.4k	7.8k	2.5k
Total Count					29k	88.2k	27.8k

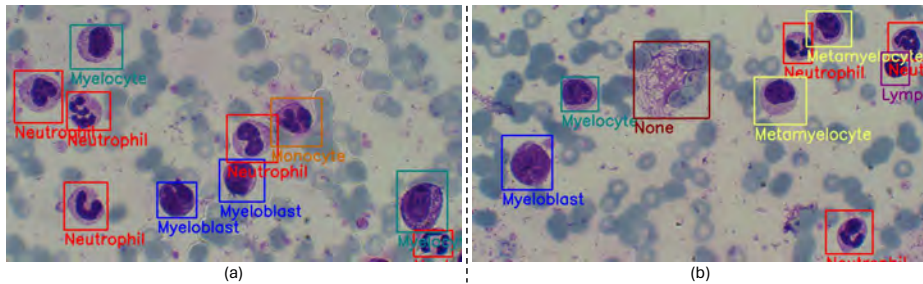


Fig. 1: Two samples images from the LeukemiaAttri dataset are shown in (a) and (b) sections with multiple WBC types

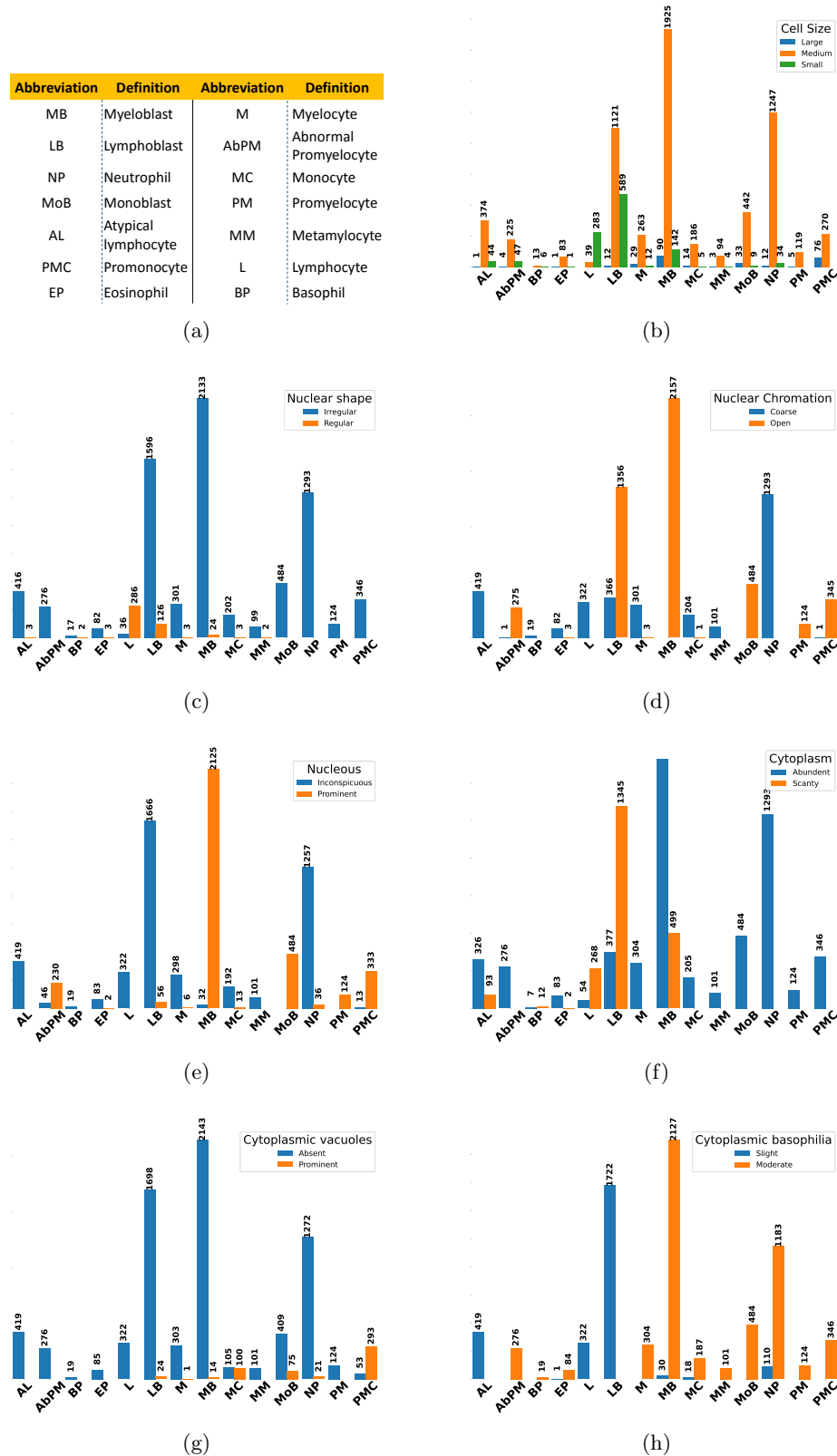


Fig. 2: Attribute label counts w.r.t WBC types in LeukemiaAttri dataset: (a) Abbreviations of WBC types, (b) Cell Size, (c) Nuclear Shape, (d) Nuclear Chromatin, (e) Nucleus, (f) Cytoplasm, (g) Cytoplasmic vacuoles, (h) Cytoplasmic basophilia