

Supplementary Materials

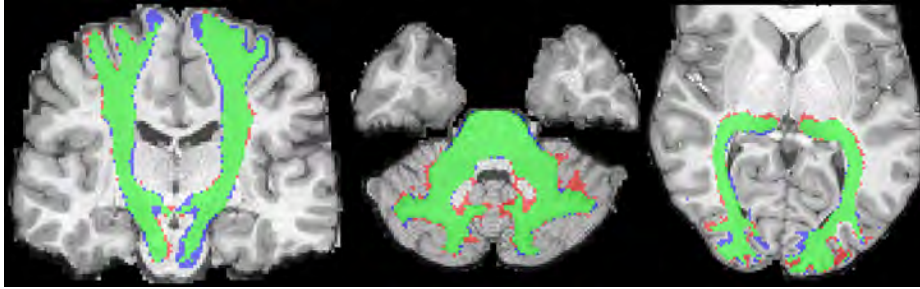


Fig. 1. Higher magnification for Figure 4 of the paper. Example CST, MCP, and OPR tracts segmented with the foundation model fine-tuned on 15 images in Task 2. Green voxels are correct segmentation, while blue and red voxels, respectively, show over-segmentation and under-segmentation.

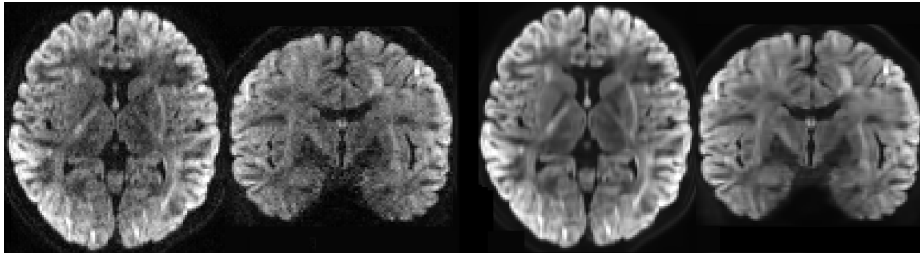


Fig. 2. Higher magnification for Figure 5 of the paper. Example dMRI denoising results by the foundation model in Task 3. Left: original noisy images; right: images denoised with the proposed foundation model (without any fine-tuning on the target task).