

A Region-Based Approach to Diabetic Retinopathy Classification with Superpixel Tokenization

1. INTERPRETABILITY

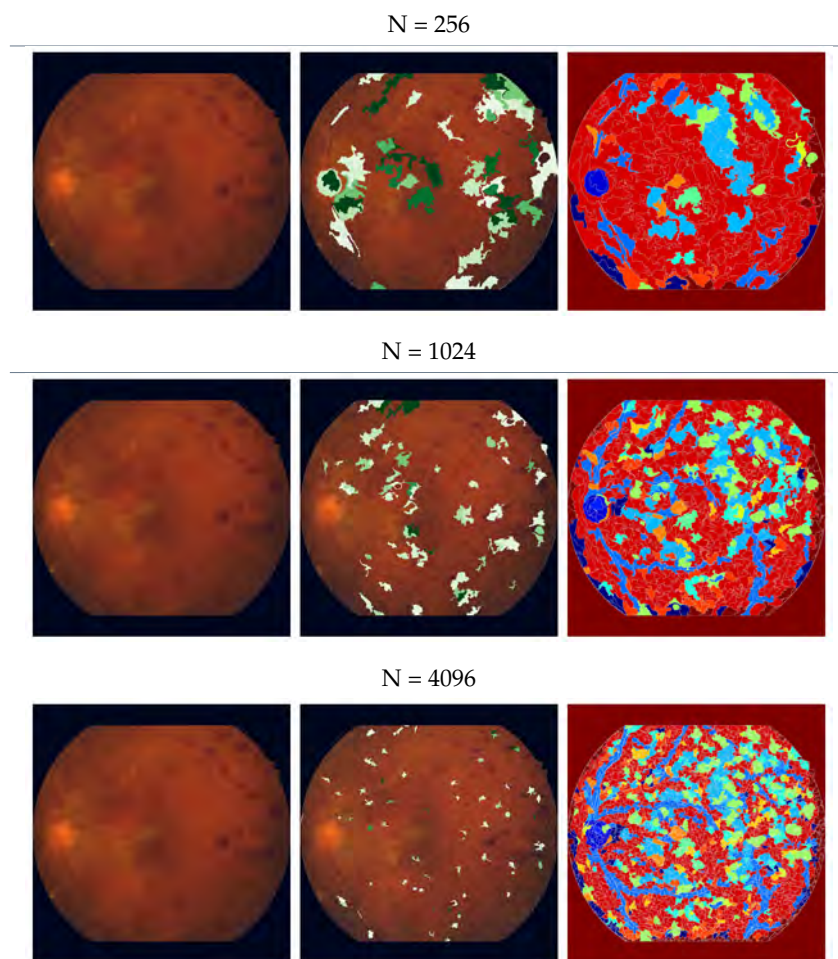
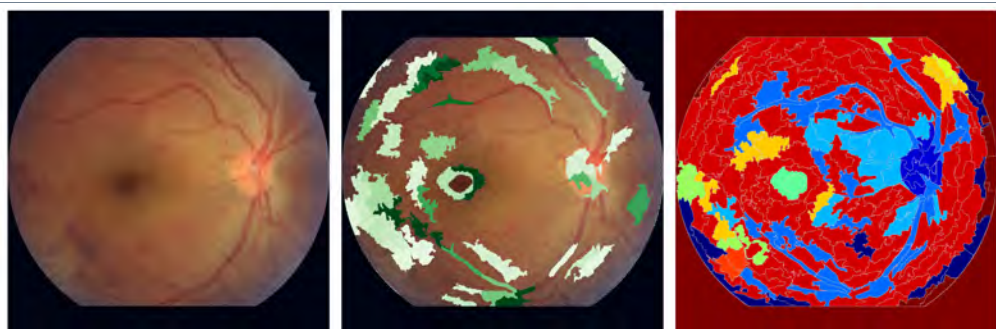
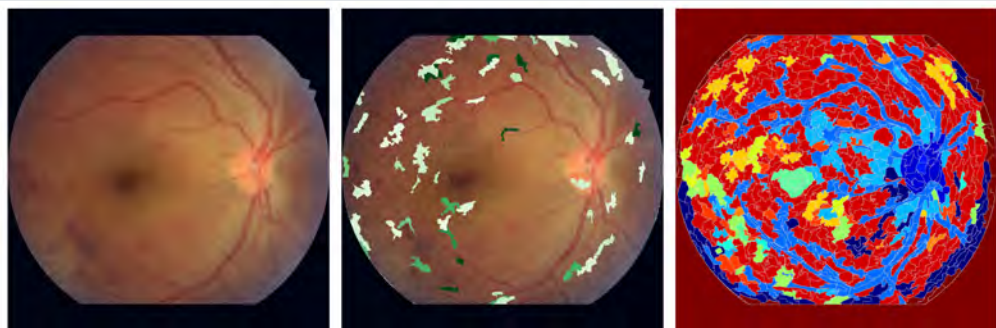


Table S1. First column: original image, second column: attention importance score from 0.5 to 1.0 (Green=0.5, White=1.0), third column: clustering of token based on the prototype association (each cluster is represented by a different color). We vary the number of initial SLIC superpixels at each row.

N = 256



N = 1024



N = 4096

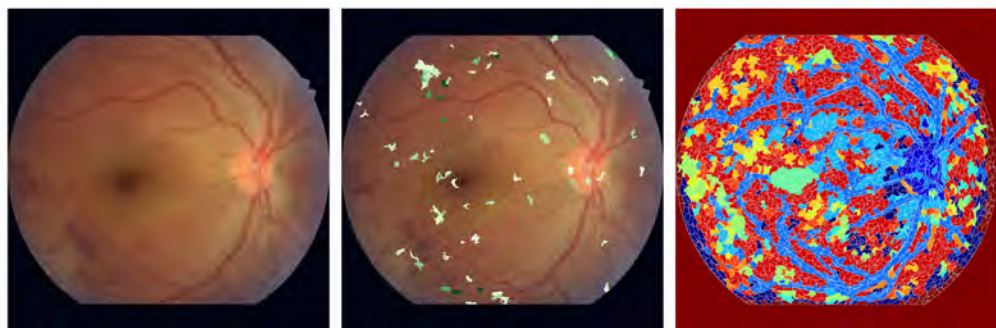


Table S2. First column: original image, second column: attention importance score from 0.5 to 1.0 (Green=0.5, White=1.0), third column: clustering of token based on the prototype association (each cluster is represented by a different color). We vary the number of initial SLIC superpixels at each row.