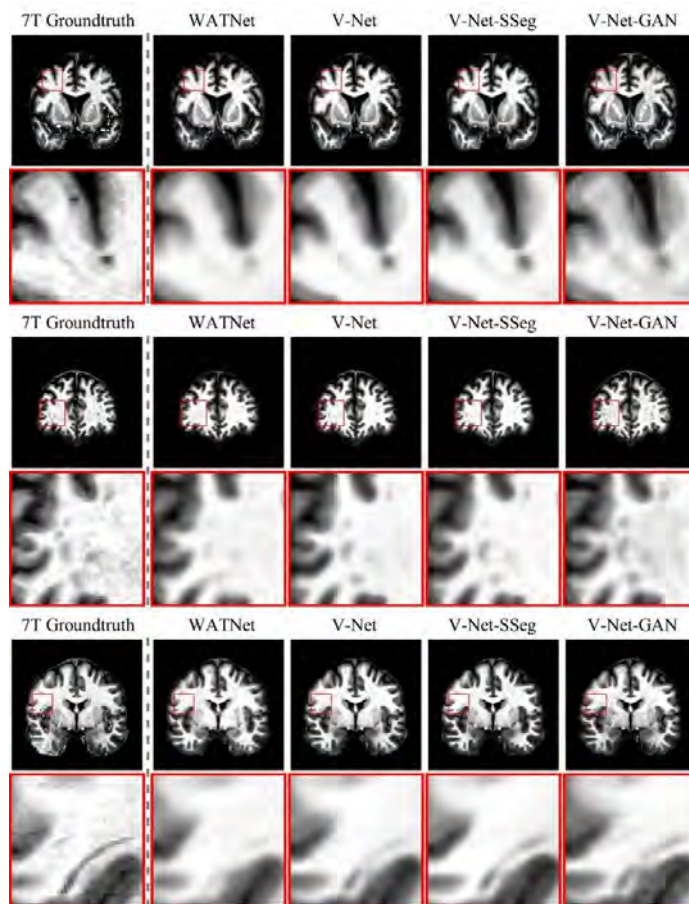


**Table S1.** Leave-One-Out cross validation performance metrics across synthetic 7T models.

Task	WATNet	V-Net	V-Net-SSeg	V-Net-GAN
SSIM	$0.881\pm 0.008$	$0.914\pm 0.016$	$0.908\pm 0.013$	$0.899\pm 0.012$
PSNR	$23.6\pm 0.37$	$25.60\pm 0.77$	$25.51\pm 0.74$	$24.33\pm 0.93$
DICE	$0.848\pm 0.016$	$0.899\pm 0.015$	$0.902\pm 0.011$	$0.886\pm 0.018$



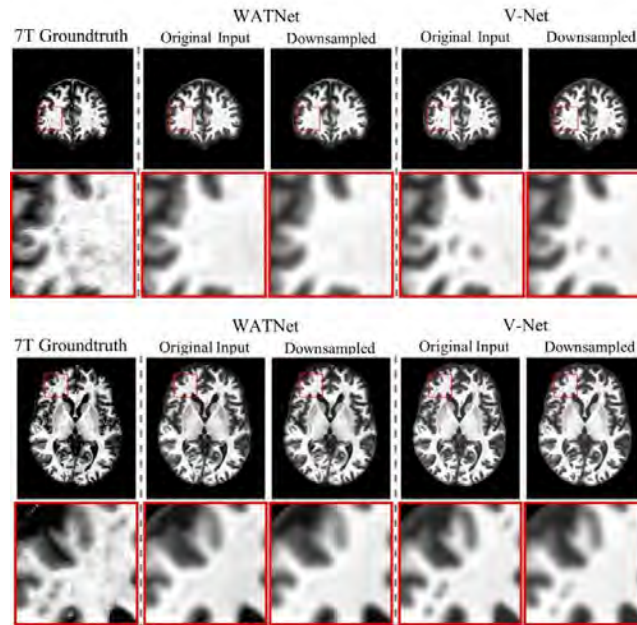
**Fig. S1.** Qualitative comparison of synthetic 7T images across three subjects with mild TBI. Every row corresponds to a unique subject.

**Table S2.** 6-fold cross validation results for WATNet trained with data augmentation.

Task	WATNet	WATNet	WATNet
	SSIM	PSNR	DICE
Original resolution	$0.877\pm 0.010$	$24.97\pm 0.34$	$0.869\pm 0.006$
Downsampled (s=2)	$0.867\pm 0.008$	$24.57\pm 0.37$	$0.862\pm 0.011$

**Table S3.** 6-fold cross validation results for V-Net trained with data augmentation.

Task	V-Net	V-Net	V-Net
	SSIM	PSNR	DICE
Original resolution	$0.880\pm 0.013$	$24.97\pm 0.30$	$0.873\pm 0.010$
Downsampled (s=2)	$0.867\pm 0.012$	$24.63\pm 0.33$	$0.863\pm 0.009$



**Fig. S2.** Comparison of synthetic 7T images generated from original and downsampled input MRIs. Every row corresponds to a unique subject. Input image resolution is downsampled by a factor of 2 in the downsampled scenario.