

Supplementary Material

Appendix A

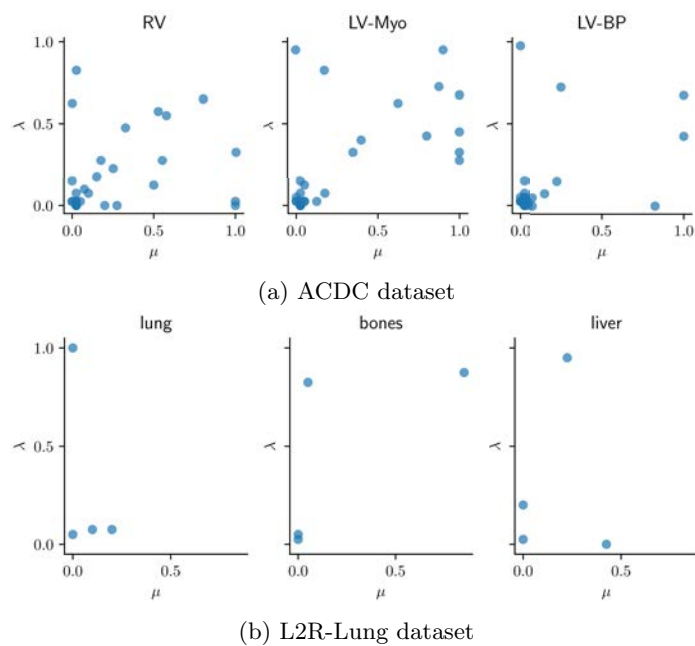


Fig. 4: The subject-specific tissue-wise regularization parameters λ, μ for the ACDC and L2R-Lung datasets that are estimated with the trained global model. In Fig. 4a, the classes correspond to the right ventricle (RV), myocardium (LV-Myo), and left ventricle blood pool (LV-BP).

Appendix B

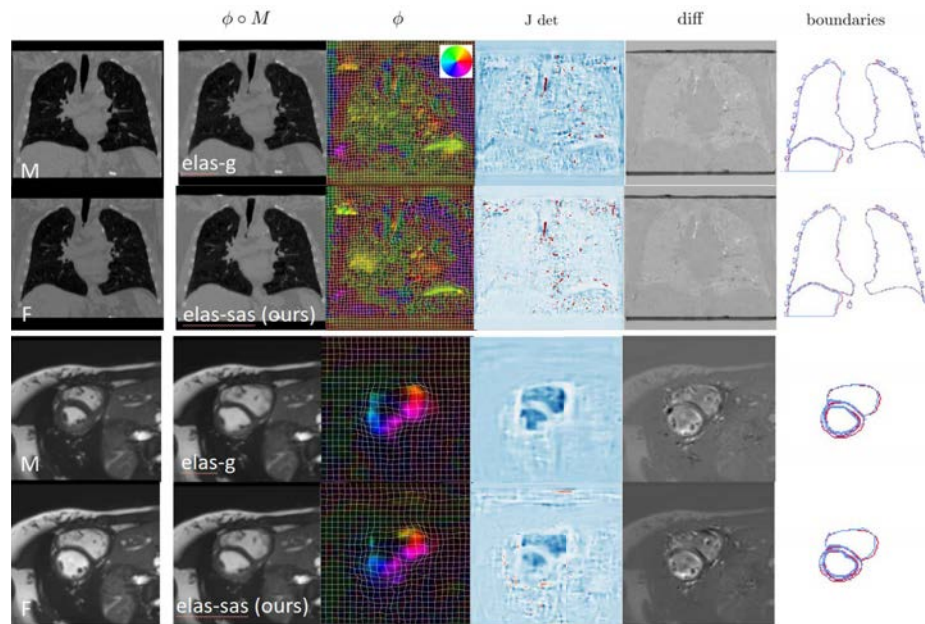


Fig. 5: Further visual registration examples of the NLST (top) and ACDC (bottom) test dataset. The left column shows the moving (M) and fixed (F) images. From left to right: Warped moving image, predicted deformation, Jacobian determinant (blue: positive values, red: negative values), difference image between fixed and warped image, segmentation map boundaries.