

# Supplementary Material: Conditional Diffusion Model for Versatile Temporal Inpainting in 4D Cerebral CT Perfusion Imaging

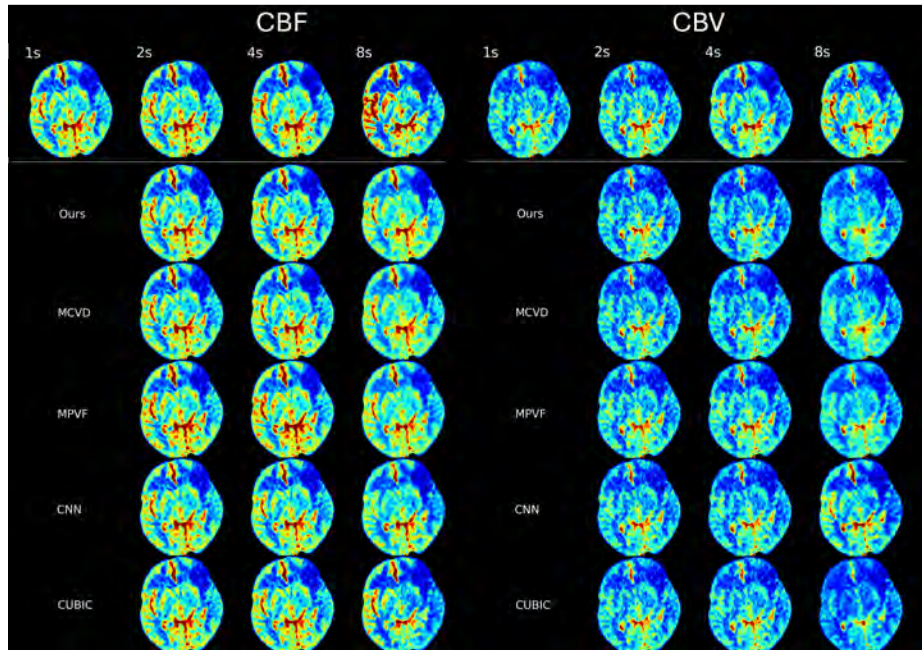
Juyoung Bae<sup>1</sup>, Elizabeth Tong<sup>4</sup>, and Hao Chen<sup>1,2,3</sup>(✉)

<sup>1</sup> Department of Computer Science and Engineering,  
The Hong Kong University of Science and Technology, Kowloon, Hong Kong  
`{jbaeaa, jhc}@cse.ust.hk`

<sup>2</sup> Department of Chemical and Biological Engineering,  
The Hong Kong University of Science and Technology, Kowloon, Hong Kong

<sup>3</sup> Division of Life Science,  
The Hong Kong University of Science and Technology, Kowloon, Hong Kong

<sup>4</sup> Department of Pediatric Radiology,  
Stanford University School of Medicine, Stanford, CA, USA  
`etong@stanford.edu`



**Fig. 1.** Cerebral Blood Flow (CBF) and Cerebral Blood Volume (CBV) maps derived from different temporal resolution settings, with the top row presenting non-interpolated baselines. The PPMs shown here are from the same CTP sequences as in Figure 3 of the main text. CBF maps are clipped to 800 mL/100g/min and CBV maps to 200 mL/100g for visualization.