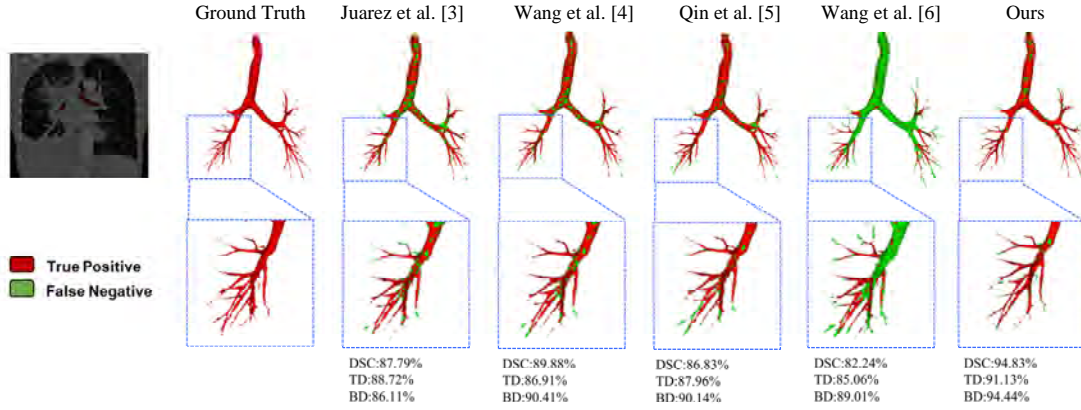


## Appendix

### A1. Qualitative and quantitative results on AeroPath dataset



**Figure A1.** Results of airway segmentation using different methods on AeroPath dataset. True positive voxels are depicted in red color. False positive voxels are depicted in green color.

**Table A1.** Results (%) of the proposed method compared to state-of-the-art methods on AeroPath dataset (Mean  $\pm$  Standard deviation)

Method	DSC	Pre	Sen	TD	BD
3D-UNet [7]	<b>90.35(3.74)</b>	91.72(10.97)	90.13(4.97)	79.69(9.89)	81.45(9.18)
VNet [10]	88.93(9.11)	91.15(8.04)	87.83(7.10)	90.25(6.61)	92.45(6.89)
VoxResNet [17]	90.27(2.00)	<b>93.36(8.38)</b>	88.14(5.29)	79.74(10.27)	81.23(9.44)
Juarez et al. [3]	88.36(2.11)	91.33(8.54)	86.46(6.20)	87.30(9.19)	89.86(10.09)
Wang et al. [4]	89.11(0.81)	<u>91.77(7.64)</u>	87.55(7.18)	91.00(5.00)	<u>93.92(3.26)</u>
Qin et al. [5]	88.35(7.14)	91.29(7.34)	86.64(8.02)	91.81(5.29)	93.32(4.21)
Wang et al. [6]	89.23(3.04)	90.78(10.67)	89.09(6.77)	<u>91.83(6.89)</u>	93.63(4.41)
Our proposed	<u>90.33(5.36)</u>	87.35(11.13)	<b>94.55(3.47)</b>	<b>94.43(3.18)</b>	<b>96.25(3.10)</b>