

Fig. 1. (a) HE-stained images. (b) IHC slides with the annotation of cancer areas. (c) The attention maps generated by the baseline method indicate dispersed attention. (d) The attention maps of the proposed method show focused attention on annotated regions. The color red indicates areas of high attention, while blue indicates low.

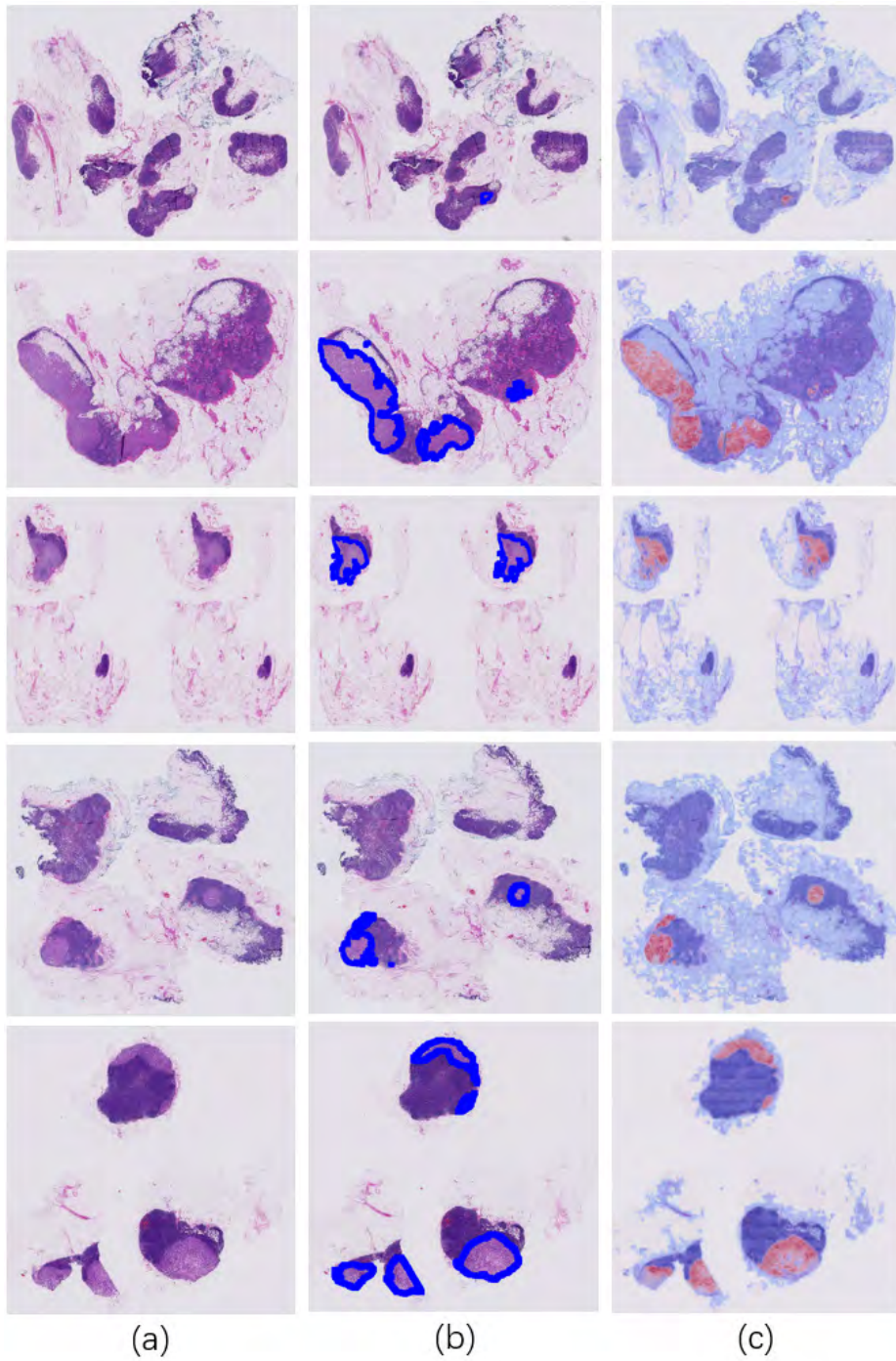


Fig. 2. The attention visualization results of the model on the Camelyon16 dataset. (a) Original WSI. (b) Original WSI with cancer region annotation. (c) Attention visualization results of the proposed method. The color red indicates areas of high attention, while blue indicates areas of low attention.