

Supplementary of "Towards a text-based quantitative and explainable histopathology image analysis"

Anh Tien Nguyen, Trinh Thi Le Vuong, and Jin Tae Kwak

School of Electrical Engineering, Korea University, Seoul 02841, Korea
 {ngtienanh, trinhvg, jkwak}@korea.ac.kr

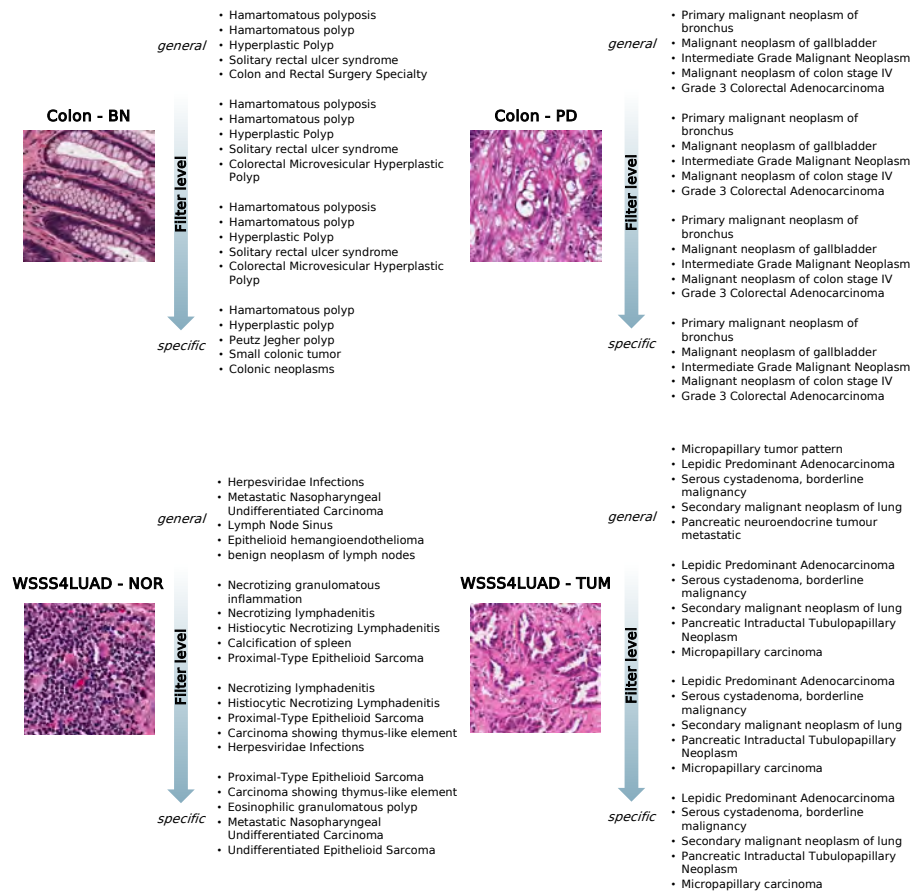


Fig. 1. Examples of retrieval process of Colon and WSSS4LUAD with four filter levels with top-5 closest keywords.

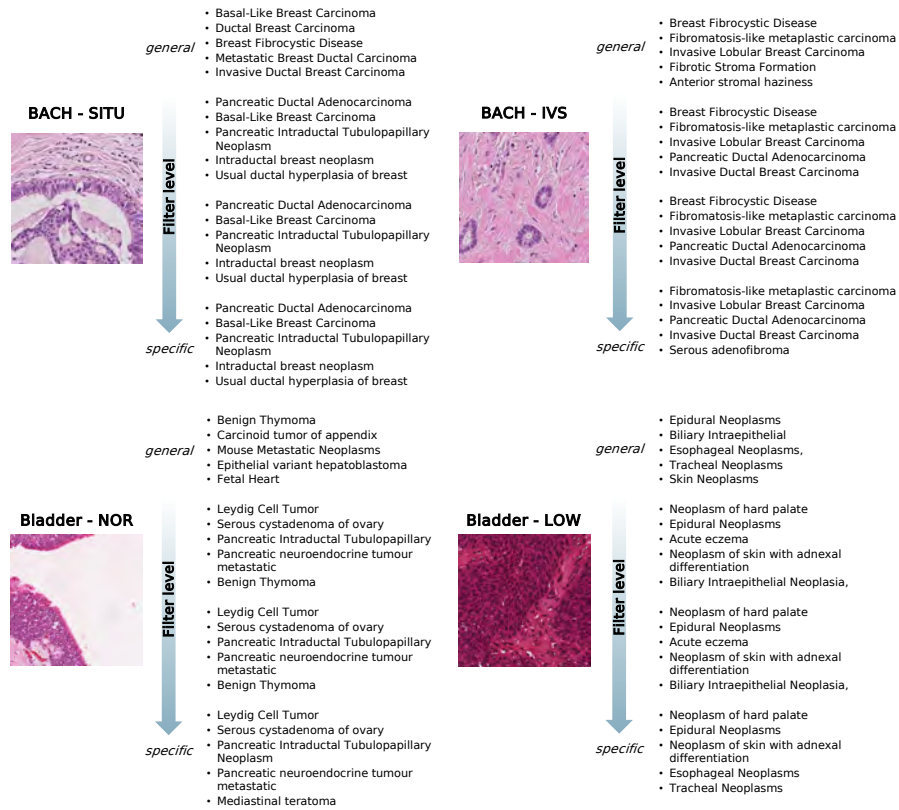


Fig. 2. Examples of retrieval process of **BACH** and **Bladder** with four filter levels with top-5 closest keywords.