

Supplementary Information

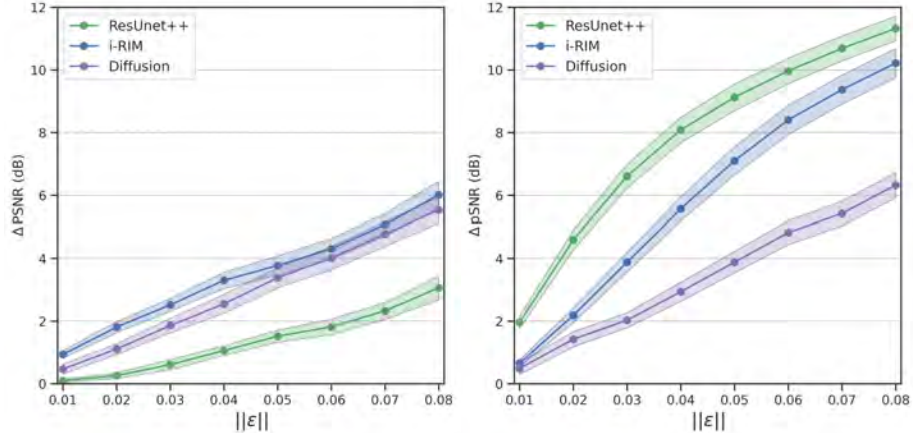


Fig. S1: Comparisons of the pSNR change of all models against l_2 -bounded adversaries with increasing perturbation amplitudes in the frequency space. **left**, A worst-case perturbation was generated by using the trained i-RIM model. Comparisons in the left subplot correspond to our experiments outlined in Fig. 2a. **Right**, A worst-case perturbation was generated by using the ResUnet++ model. Comparisons in the right subplot correspond to our experiments outlined in Fig. 2b.

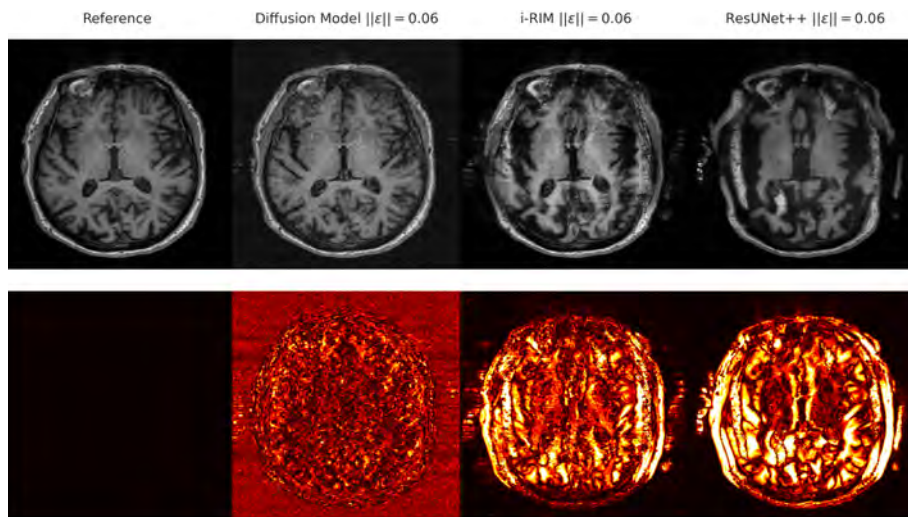


Fig. S2: **Top**, Reconstructions of both supervised and unsupervised methods under the mid-level perturbation generated from ResUNet++. **Bottom**, Mean absolute error map of all reconstructions. The diffusion model, trained like a denoiser, exhibits an unstable reconstruction with a distinct noisy pattern that is difficult to distinguish from the clean reconstruction.