

Appendix

A. Computing the correlation of the real/ generated features

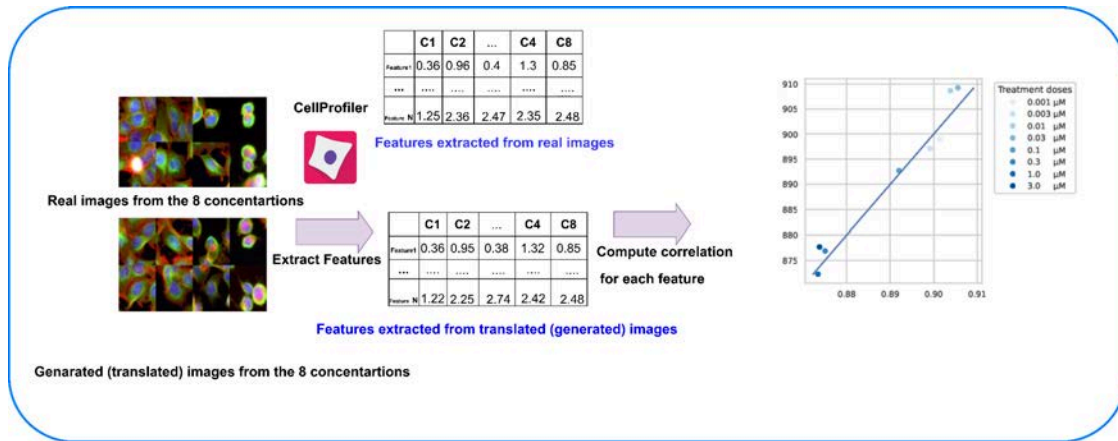


Fig1. Computing the correlations between the real and the generated images across all the treatment concentrat

B. More examples on image translations

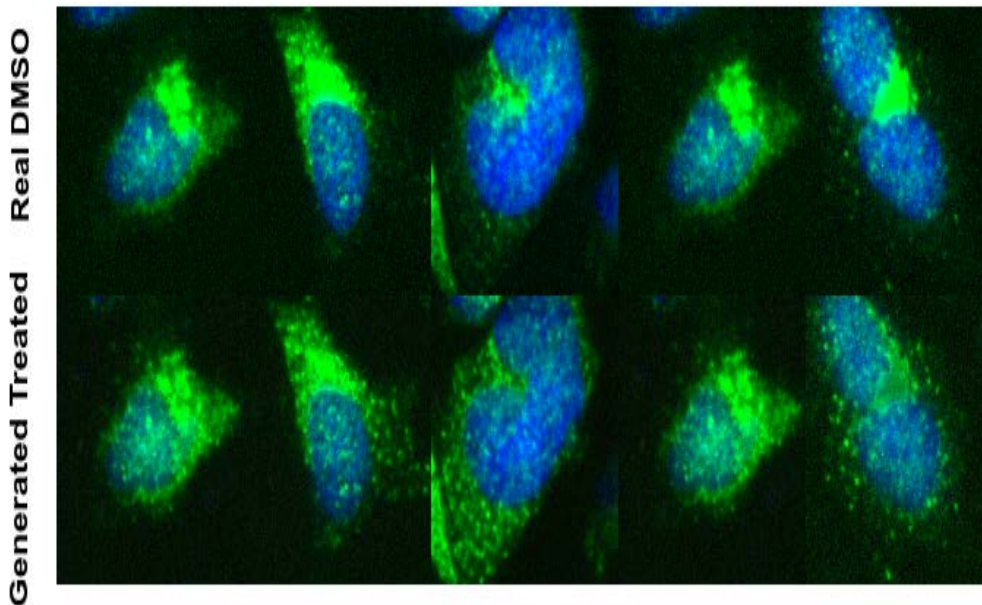


Fig2: Translating untreated images to treated ones

C. Translation using different methods

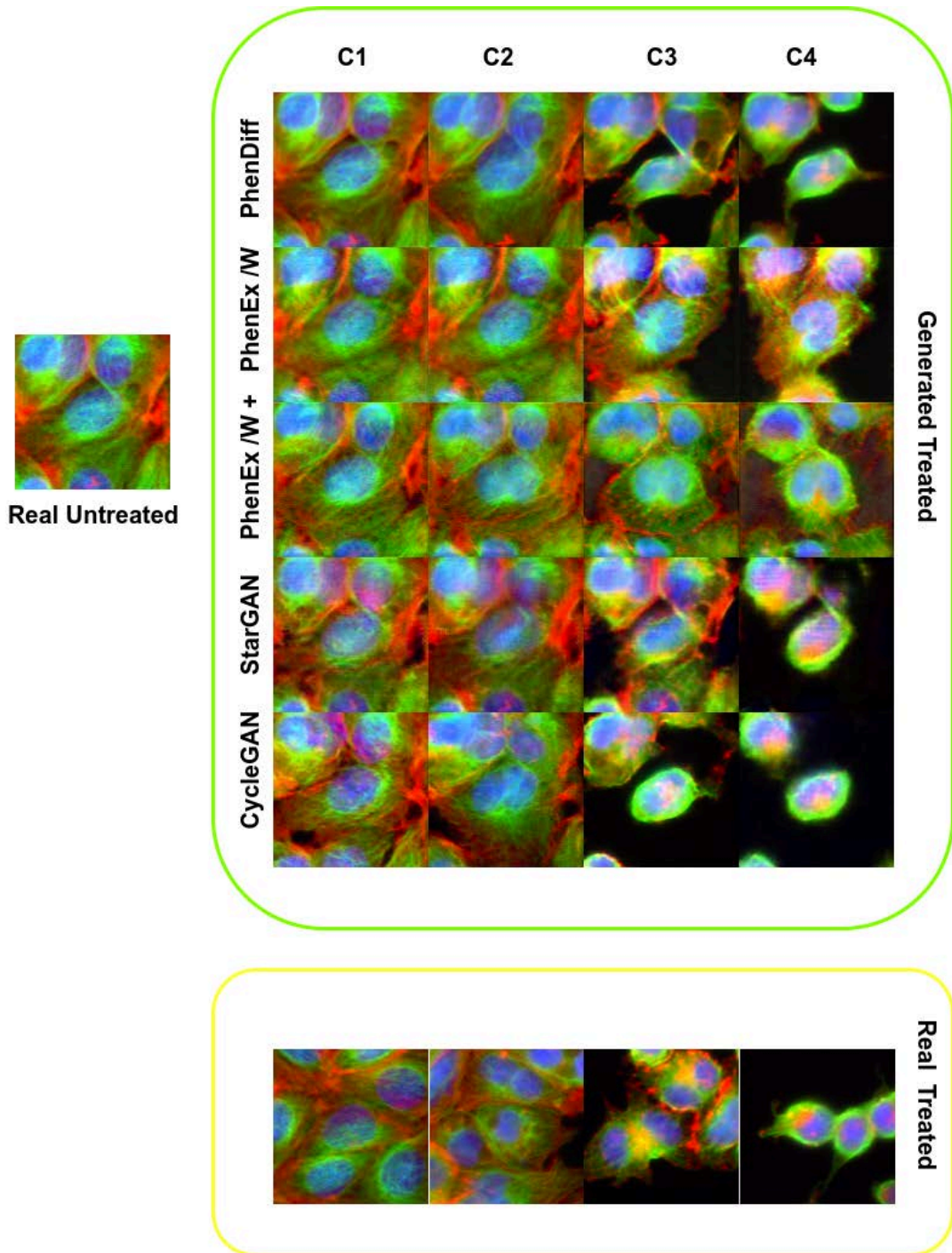


Fig. 3: We translated a real untreated image to various concentrations of Latrunculin B. We observe that we achieve a superior translation with Phendiff compared to other methods.