

Supplementary Material for Reciprocal Collaboration for Semi-supervised Medical Image Classification

Qingjie Zeng¹, Zilin Lu¹, Yutong Xie², Mengkang Lu¹, Xinke Ma¹, and Yong Xia^{1,3,4†}

¹ National Engineering Laboratory for Integrated Aero-Space-Ground-Ocean Big Data Application Technology, School of Computer Science and Engineering, Northwestern Polytechnical University, Xi'an 710072, China

² Australian Institute for Machine Learning, The University of Adelaide, Australia

³ Research & Development Institute of Northwestern Polytechnical University in Shenzhen, Shenzhen 518057, China

⁴ Ningbo Institute of Northwestern Polytechnical University, Ningbo 315048, China
yxia@nwpu.edu.cn

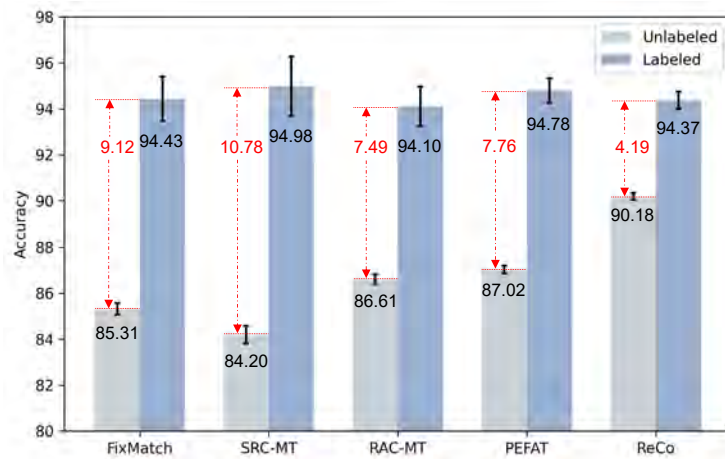


Fig. 1. Analysis of pseudo-label quality on the ISIC 2018 dataset. A much smaller performance gap is observed when comparing ReCo to the others.

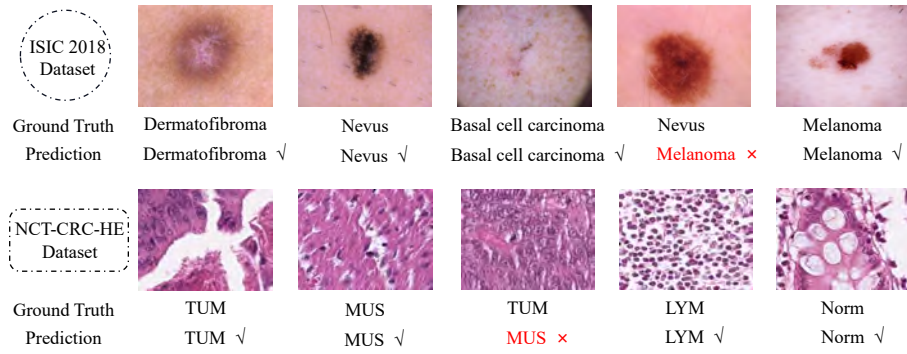


Fig. 2. Visualization of classification. ReCo can make correct predictions in most cases.