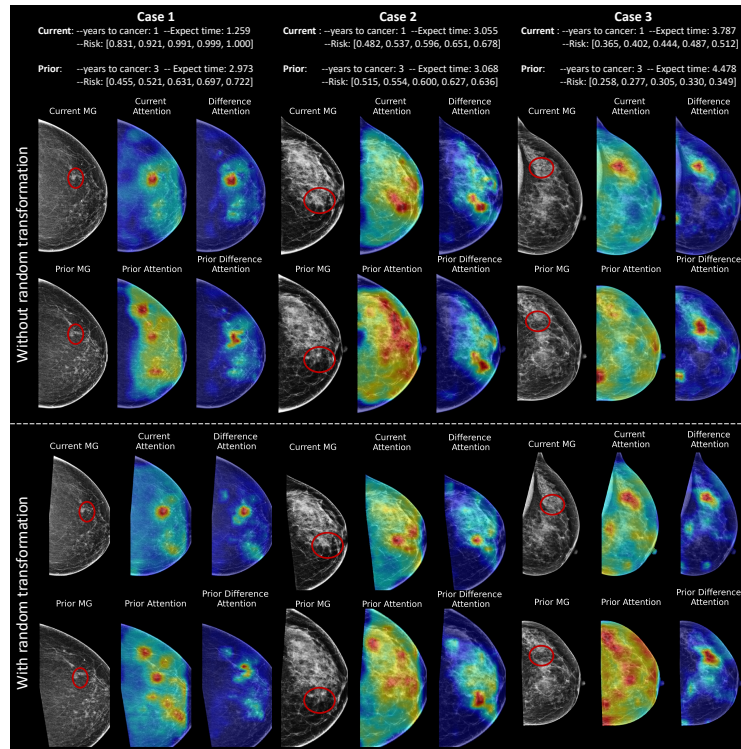


## Supplementary Material

**Table 1.** Details of time-to-cancer label distribution and dataset split.

		Positive					Negative	
		BC 1Y	BC 2Y	BC 3Y	BC 4Y	BC 5Y	ALL	BC >5Y
EMBED	Train	520	218	128	96	78	1,040	25,596
	Val	212	84	70	50	46	462	10,506
	Test	302	106	76	60	30	574	15,146
	Total	1,034	408	274	206	154	2,076	51,248
Inhouse	Train	5,440	1,138	1,126	964	862	9,530	118,666
	Val	742	174	158	158	112	1,344	16,384
	Test	978	192	192	170	174	1,706	23,538
	Total	7,160	1,504	1,476	1,292	1,148	12,580	158,588



**Fig. 1.** More visualization cases of attention alignment on prior-current mammograms. The **red** circles indicate the existing tumors or BI-RADS suspicious areas. We note that the high-risk difference areas not only identify the lesion but also are consistent between prior and current images. Even after randomly rotating, translating, and scaling the two-time point images, the high-risk difference areas derived by our model are still consistent between them.