

A Supplementary

Table A1. Reconstruction PSNR (dB) for SA and LA views. From left to right it shows the PSNR of our model trained with only SA 2D+T planes, only LA 2D+T planes, and all available multi-view planes separately.

Input Eval.	SA	LA	ALL
SA	26.20 \pm 0.84	N.A.	31.08\pm0.86
LA	N.A.	25.11 \pm 1.48	28.60\pm1.50

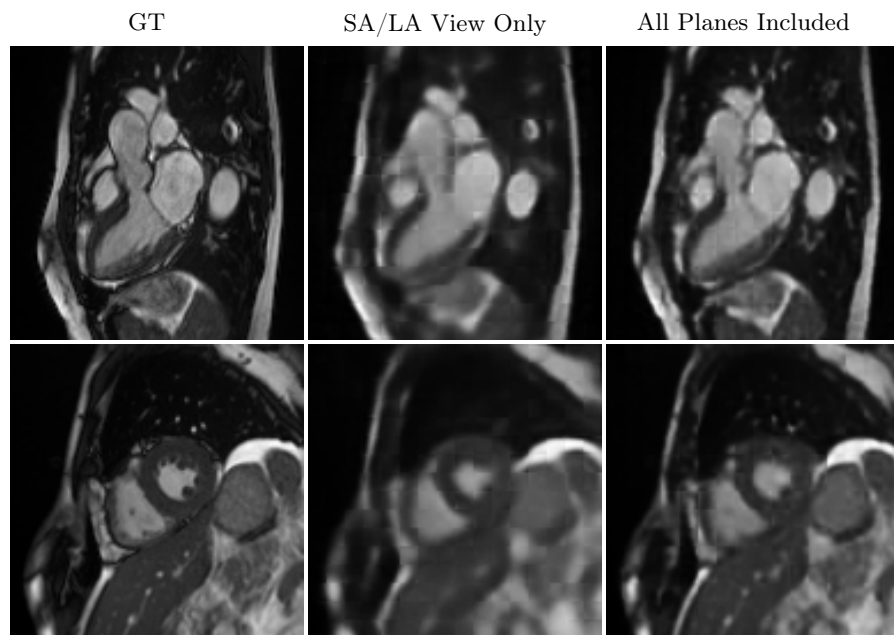


Fig. A1. Reconstruction samples in the pre-training phase. The second column shows reconstructions with input planes from a single view (SA/LA only), while the last column shows the reconstructions with planes from both views included.