

Appendix for Paper-1438

A. High-resolution Synthetic Samples.

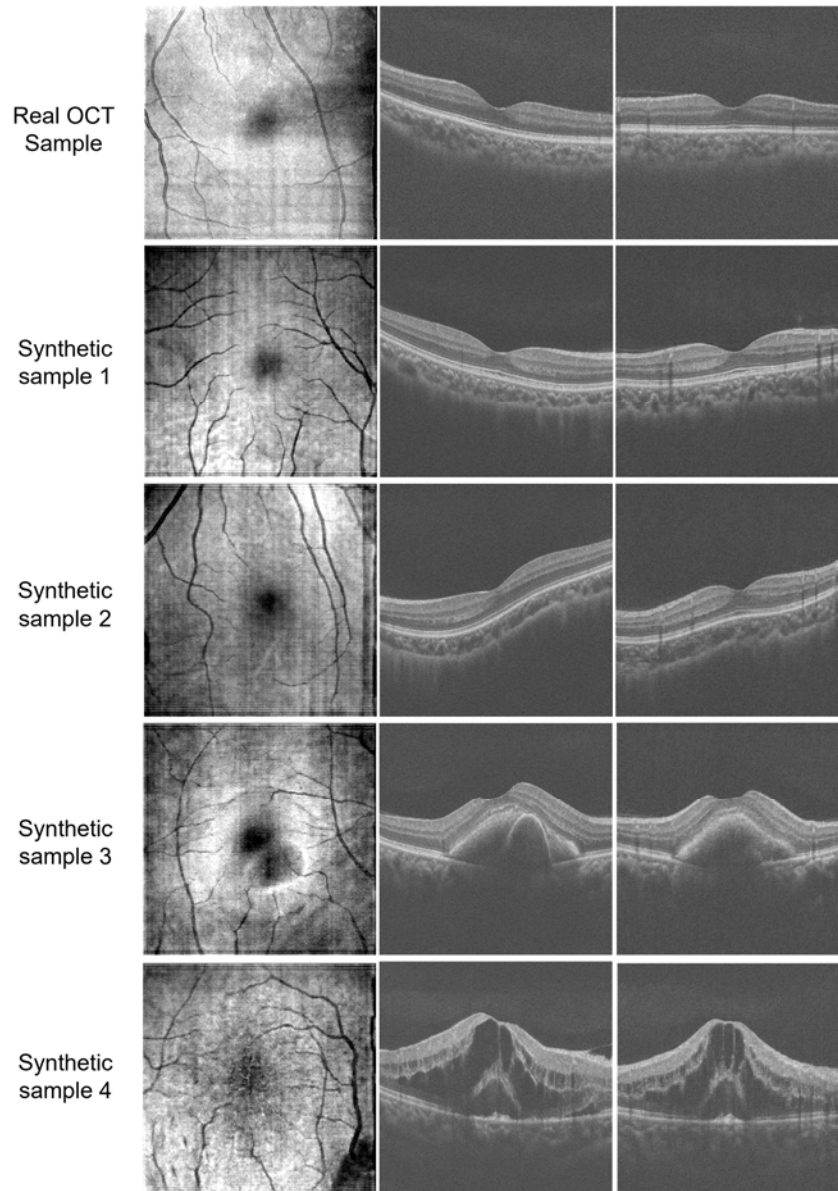


Fig. S1. High-resolution synthetic samples of CA-LDM. The first three rows are corresponding to samples in Fig. 2. The last two rows are samples with obvious pathological features.

B. Samples of Label Guided Synthesis

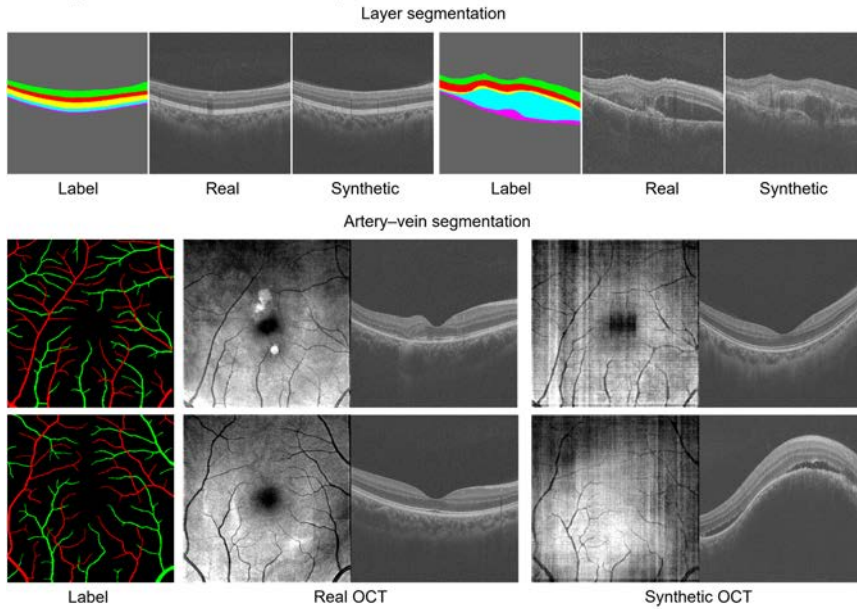


Fig. S2. Samples of label guided synthesis of CA-LDM for two tasks, given as projection and slice views. It can be found that CA-LDM has the capability to achieve feature disentanglement, enabling the generation of more varied image-label pairs.

C. Qualitative results of downstream segmentation tasks

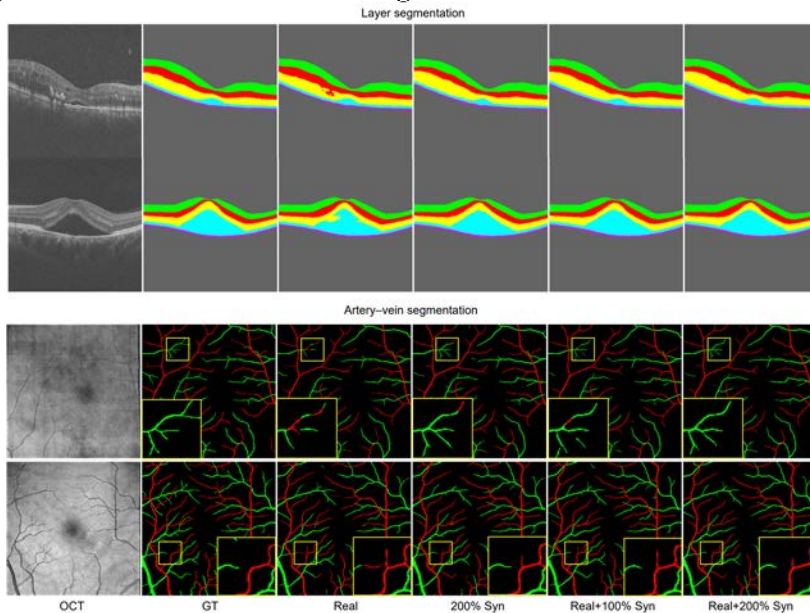


Fig. S3. Qualitative results of models trained by different data corresponding to Table. 2.