

Appendix

Table 2: Comparison of DICE scores per segmented structure. We perform an evaluation for each structure and compare the same methods as in Tab. 1. **M** denotes the row-wise mean. The full names of the segmented structures can be found in Fig. 4.

	A	DD	Eso	GB	LK	L	P	RK	Spl	Sto	Tra	UB	M
Same	88.7	61.2	74.0	75.8	88.8	92.6	60.9	89.1	90.6	78.9	84.0	78.7	80.3
Other	81.8	38.1	68.0	40.9	75.6	49.2	39.2	71.7	61.4	68.4	76.5	40.2	59.3
CenAvg	87.4	0.0	55.2	0.0	83.4	89.7	65.1	84.9	89.3	72.9	90.3	74.5	66.1
CUNA.	82.4	0.0	74.1	0.0	83.0	86.8	61.8	83.8	86.4	73.3	87.7	70.8	65.8
FedAvg	88.9	12.6	80.2	60.9	81.9	90.5	70.4	83.9	90.1	55.6	91.6	73.3	73.3
FUNA.	88.1	51.3	81.7	73.5	85.3	91.3	66.2	86.5	90.2	78.7	92.8	71.8	79.8

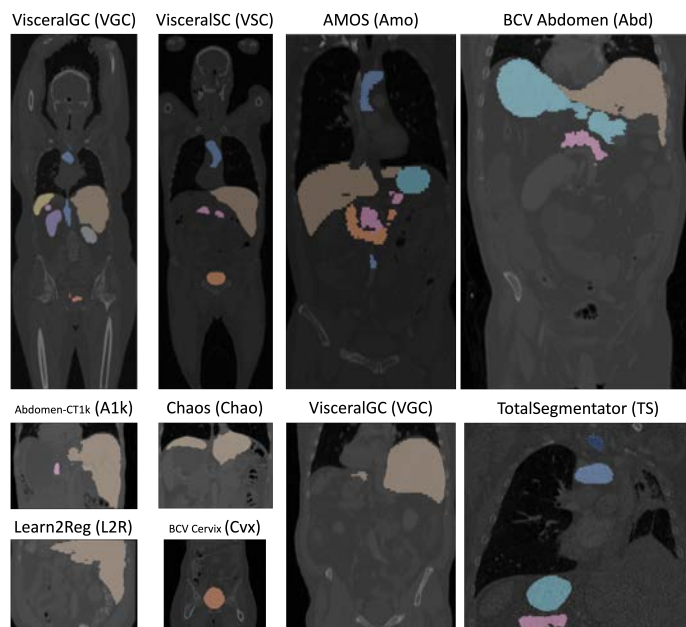


Fig. 6: One representative slide from each dataset used in the federation with corresponding labels. Additional to the different annotated structures in each dataset, the field of view and with that the intensity distributions vary across datasets.

Table 3: Comparison of DICE scores per segmented structure and dataset. The full names of the segmented structures can be found in Fig. 4

DS	Meth.	A	DD	Eso	GB	LK	L	P	RK	Spl	Sto	Tra	UB
VSC	Cen	80.44	-	-	-	79.36	89.23	42.77	84.44	85.91	-	92.57	65.45
	CUN	73.53	-	-	-	80.73	84.91	39.11	84.59	81.75	-	88.32	63.18
	Fed	83.05	-	-	-	78.47	90.86	43.19	79.36	87.92	-	93.82	64.7
	FUN	80.02	-	-	-	80.38	90.49	39.94	83.28	86.86	-	92.15	64.99
LiTS	Cen	-	-	-	-	-	91.24	-	-	-	-	-	-
	CUN	-	-	-	-	-	87.95	-	-	-	-	-	-
	Fed	-	-	-	-	-	92.51	-	-	-	-	-	-
	FUN	-	-	-	-	-	93.06	-	-	-	-	-	-
Abd	Cen	91.31	-	-	-	91.67	90.35	64.5	89.61	92.03	72.47	-	-
	CUN	85.82	-	-	-	89.65	87.39	62.01	88.92	90.46	72.45	-	-
	Fed	91.5	-	-	-	88.98	92.87	74.01	91.3	93.36	57.5	-	-
	FUN	91.9	-	-	-	91.59	92.67	67.71	91.96	94.35	77.94	-	-
Cvx	Cen	-	-	-	-	-	-	-	-	-	-	-	85.05
	CUN	-	-	-	-	-	-	-	-	-	-	-	80.4
	Fed	-	-	-	-	-	-	-	-	-	-	-	78.25
	FUN	-	-	-	-	-	-	-	-	-	-	-	78.88
Chao	Cen	-	-	-	-	-	95.41	-	-	-	-	-	-
	CUN	-	-	-	-	-	92.86	-	-	-	-	-	-
	Fed	-	-	-	-	-	91.92	-	-	-	-	-	-
	FUN	-	-	-	-	-	94.63	-	-	-	-	-	-
Abd1k	Cen	-	-	-	-	-	89.62	68.5	-	90.81	-	-	-
	CUN	-	-	-	-	-	86.45	66.4	-	87.64	-	-	-
	Fed	-	-	-	-	-	91.81	78.91	-	92.46	-	-	-
	FUN	-	-	-	-	-	91.7	75.74	-	92.46	-	-	-
L2R	Cen	-	-	-	-	-	88.15	-	-	87.75	-	-	-
	CUN	-	-	-	-	-	86.88	-	-	84.94	-	-	-
	Fed	-	-	-	-	-	86.49	-	-	83.73	-	-	-
	FUN	-	-	-	-	-	89.26	-	-	83.44	-	-	-
TS	Cen	93.36	0.0	64.99	0.0	86.24	87.65	76.42	93.07	93.6	80.42	86.01	74.01
	CUN	89.41	0.0	81.3	0.0	85.53	84.74	71.74	89.77	89.92	78.44	85.51	72.47
	Fed	93.59	17.48	88.27	66.61	83.2	89.78	81.29	91.04	94.18	67.13	87.31	75.44
	FUN	93.06	65.7	87.04	80.58	89.59	90.7	75.91	90.19	94.75	88.22	93.24	73.27
VGC	Cen	86.44	-	-	-	91.65	93.53	76.02	92.82	93.44	-	92.25	73.39
	CUN	78.32	-	-	-	90.36	90.37	69.77	90.05	90.08	-	89.34	67.19
	Fed	88.37	-	-	-	81.33	92.55	74.09	81.77	94.35	-	93.54	74.94
	FUN	86.03	-	-	-	86.52	93.67	70.88	88.64	93.54	-	93.04	70.13
AMOS	Cen	85.25	0.0	45.48	0.0	68.32	82.19	62.4	64.47	81.87	65.74	-	-
	CUN	84.68	0.0	66.93	0.0	68.71	79.56	61.63	65.75	79.88	68.87	-	-
	Fed	88.09	7.64	72.22	55.09	77.29	85.31	70.69	76.19	84.67	42.23	-	-
	FUN	89.26	36.8	76.27	66.34	78.61	85.93	67.17	78.35	86.34	69.83	-	-