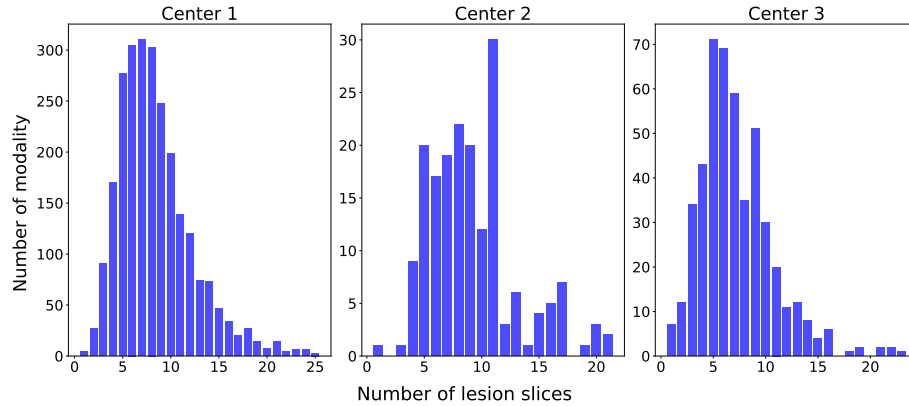


## A Dataset Details

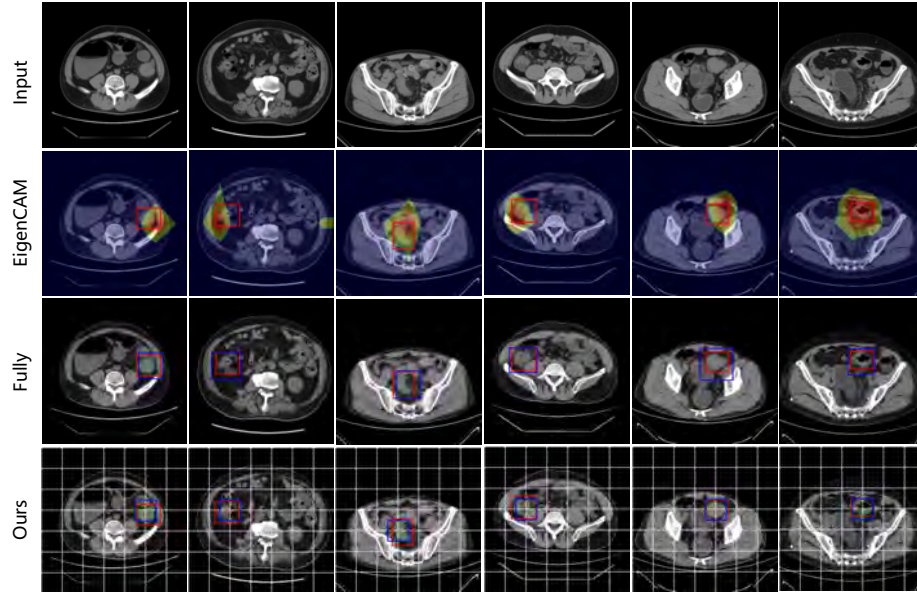
**Table 1.** Colorectal CT scan dataset statistics for three centers. Healthy controls, patients, age, and sex are the statistics of individuals, while others are statistics of modality.

	Center 1	Center 2	Center 3
Healthy controls	196	195	496
Patients	2521	177	480
Patient age (years)	57.8 (16, 94)	62.7 (30, 86)	64.7 (23, 93)
Patient sex (male) (%)	59.4	55.9	57.7
Pixel spacing (mm)	0.735 (0.547, 0.976)	0.728 (0.639, 0.975)	0.710 (0.559, 0.953)
Slice thickness (mm)	5.00	5.00	5.00
Slices per modality	94.4 (65, 123)	94.2 (57, 131)	91.2 (72, 110)
Lesion slices per modality	8.4 (1, 25)	9.2 (1, 21)	7.2 (1, 23)



**Fig. 1.** Distribution of lesion slices per modality for each center.

## B Visualization Results



**Fig. 2.** Lesion localization visualization. The red box indicates the true lesion area, while the blue box indicates the predicted area. EigenCAM generates heatmap visualization associated with the predicted category. However, it highlights some irrelevant area. Compared with the Fully, our method achieves more precise localization of CRC with very few annotations, effectively improving the reliability of the model.