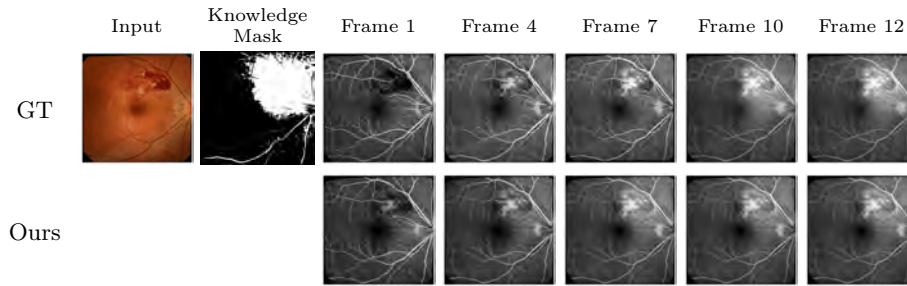


**Supplementary Table 1.** The human assessment criteria. The three aspects of the scoring criteria are: vascular perfusion, conformity of lesion dynamics to clinical patterns, and the coherence, stability, and presence of artifacts in the video.

Scale	Quality	Description
1	Excellent	Similar morphology and fluorescent changes of retinal vessels and lesions Stable video
2	Good	Slight morphology and fluorescent changes of retinal vessels and lesions Moderate video stability
3	Normal	Moderate variation in morphology and fluorescent changes of retinal vessels and lesions Indicates lesions of diagnostic significance Moderate video stability
4	Poor	Large variation in morphology and intensity of retinal vessels and lesions Without lesions of diagnostic significance Moderate video stability
5	Very Poor	Large variation in morphology and intensity of choroidal and retinal vessels Unstable video with high noise level



**Supplementary Figure 1.** Visualization of the results. We can see that our generated outputs achieve high quality comparable to ground-truth (GT).