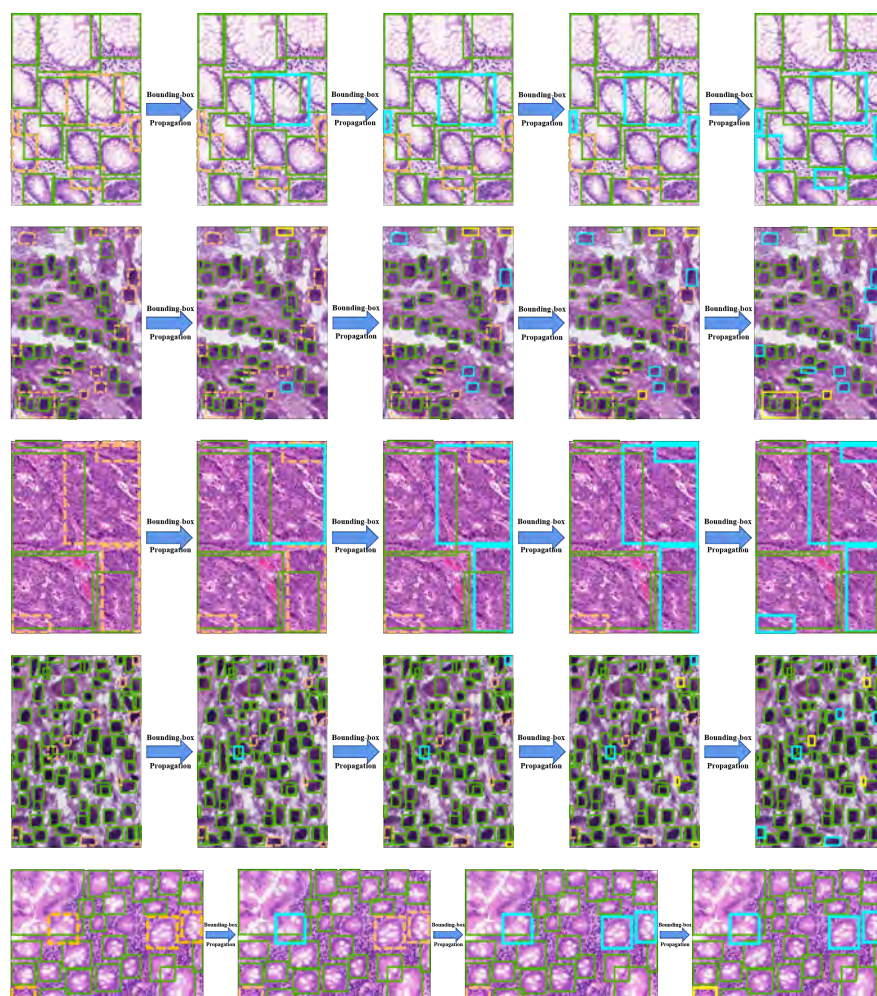


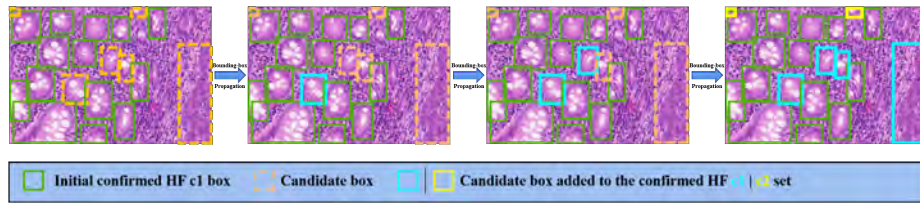
# TSBP: Improving Object Detection in Histology Images via Test-time Self-guided Bounding-box Propagation

## (Supplementary Materials)

Tingting Yang<sup>1</sup>, Liang Xiao<sup>1</sup>, and Yizhe Zhang<sup>1</sup>

<sup>1</sup>School of Computer Science and Engineering, Nanjing University of Science and Technology, China





**Fig. 1.** Visualization of the intermediate process of TSBP. For clarity, the initially confirmed HF c2 boxes are not displayed in this figure. It can be observed that the candidate boxes are gradually selected and added to the confirmed box set (c1 or c2). Moreover, the candidate boxes added to the confirmed box set (in the current round) can influence the propagation of the remaining candidate boxes (in the next rounds). All the candidate boxes are assigned category labels at the end of propagation.