

Supplementary



Fig. 1: TSNE visualization of prototypes in the memory bank learned from the source domain, original prototypes from test domains, and corresponding domain-adaptive prototypes. The model is trained on the RUNMC domain of prostate. The other five domains serve as test domains.

Table 1: In-Distribution performance of DAPSAM on A domain of prostate dataset.

Method	Intra-A	
	DSC \uparrow	ASD \downarrow
Baseline	93.58	0.60
DAPSAM	93.92	0.49

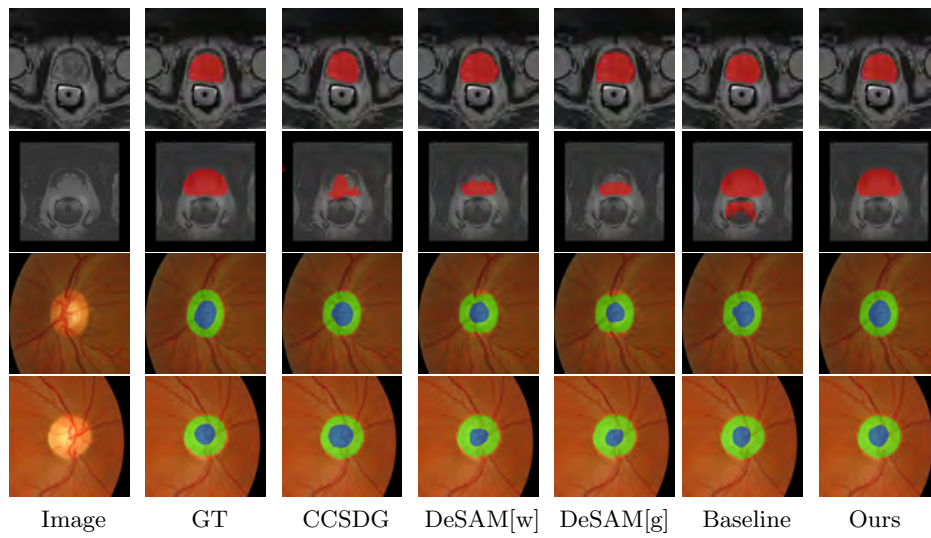


Fig. 2: Some qualitative segmentation results on prostate dataset (first two rows) and RIGA+ dataset (bottom two rows).