

HySpark: Hybrid Sparse Masking for Large Scale Medical Image Pre-Training

Supplementary Material

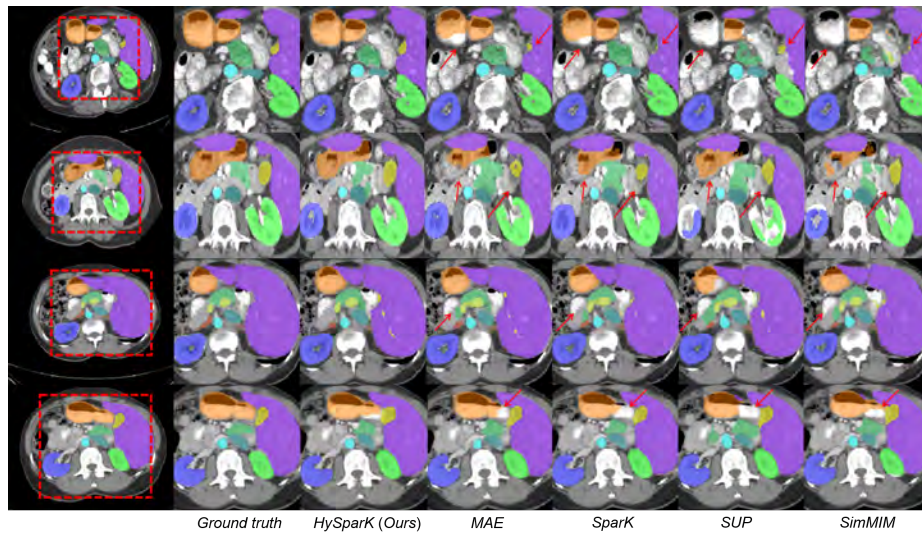


Fig. 1. Visualization Results on BTCV dataset.

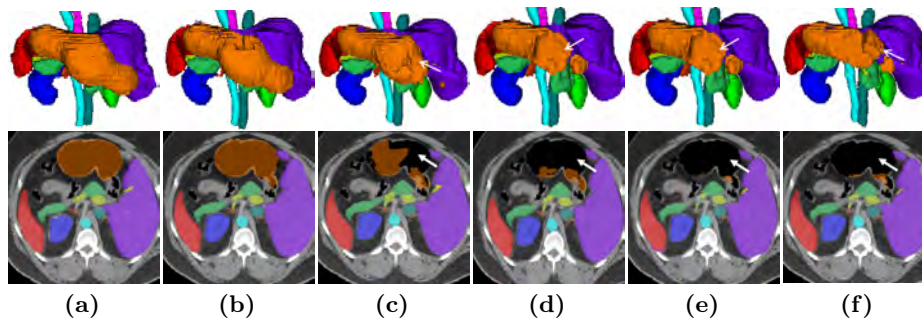


Fig. 2. Visualization Results on BTCV with 3D volume. (a) Ground Truth (b) HySpark (Ours) (c) MAE (d) Spark (e) SUP (f) SimMIM.

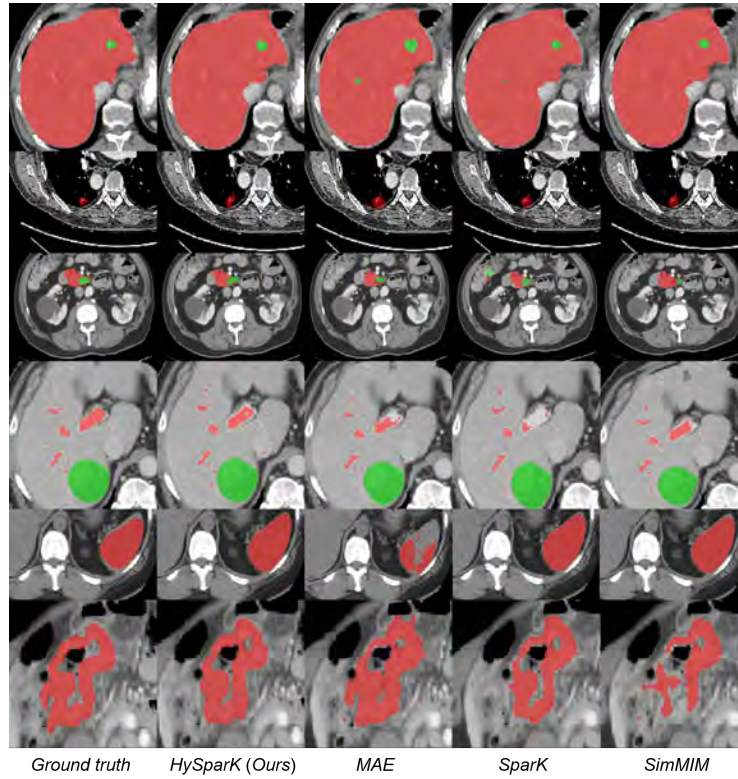


Fig. 3. Visualization Results on MSD datasets. Row1 - Liver, Row2 - Lung, Row3 - Pancreas, Row4 - Hepatic Vessel, Row5 - Spleen, Row6 - Colon.

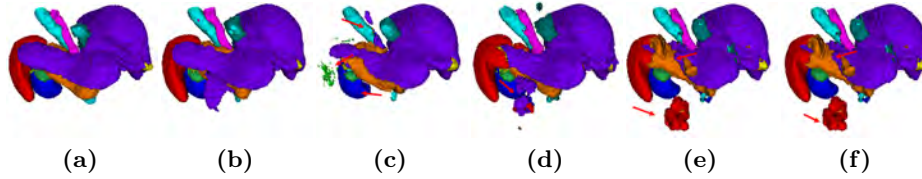


Fig. 4. Visualization Results on Smaller (20%) BTCV training set. (a) Ground Truth (b) HySpark (Ours) (c) MAE (d) Spark (e) SUP (f) SimMIM.



Fig. 5. Visualization *w/o* pretrain and *w/* pretrain Results on BTCV dataset. Row1 - Ground Truth, Row2 - *w/o* pretrain, Row3 - *w/* pretrain.