

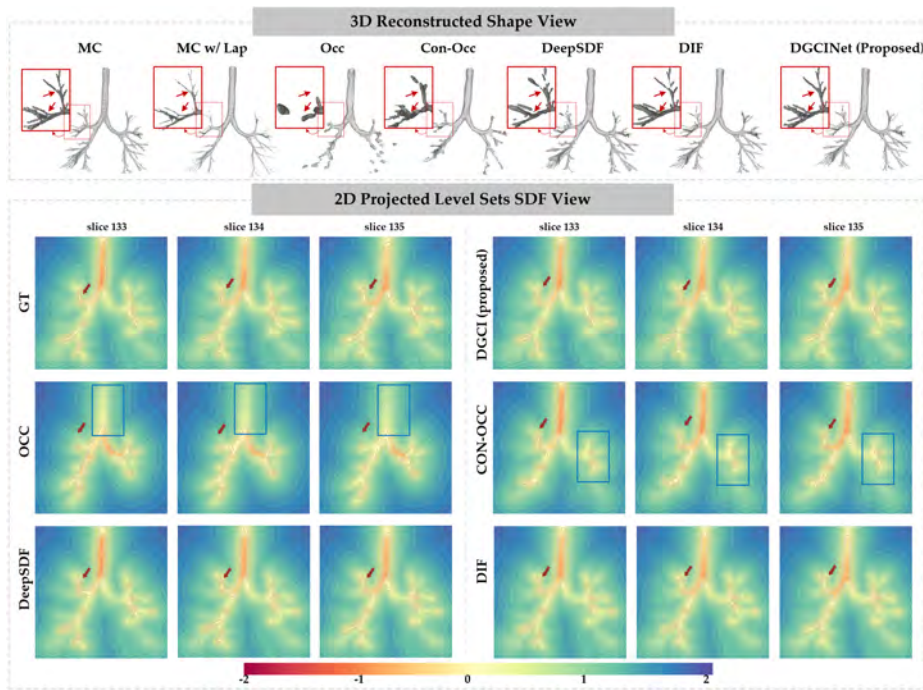
# *Supplementary Materials*

## Implicit Representation Embraces Challenging Attributes of Pulmonary Airway Tree Structures

Minghui Zhang<sup>1,2</sup>, Hanxiao Zhang<sup>1</sup>, Xin You<sup>1,2</sup>, Guang-Zhong Yang<sup>1</sup>, and Yun Gu<sup>1,2</sup> (✉)

<sup>1</sup> Institute of Medical Robotics, Shanghai Jiao Tong University, Shanghai, China  
geron762@sjtu.edu.cn

<sup>2</sup> Department of Automation, Shanghai Jiao Tong University, Shanghai, China



**Fig. 1.** The first line shows the 3D views of reconstructed shapes, and the corresponding different level sets of SDF generated from the coronal-projected slices are presented below. Blue boxes in 2D projected views denote significant differences generated by Occ/Con-Occ methods. Red arrows in highlight the areas (pointed out by 3D views in red boxes and arrows) where the DGCI modeled more accurate level sets of SDF than comparative approaches.