

Supplementary Materials

Table 1. Ablation study on the impact of σ_{LL} , σ_{LH} , σ_{HL} and σ_{HH} in Sec. 2.2 on Mayo-2016. The best result is **bold**.

Methods	PSNR	SSIM
$\sigma_{LL} = 0, \sigma_{LH} = 200, \sigma_{HL} = 200, \sigma_{HH} = 150$	37.83	89.75
$\sigma_{LL} = 200, \sigma_{LH} = 200, \sigma_{HL} = 200, \sigma_{HH} = 150$	37.94	89.71
$\sigma_{LL} = 100, \sigma_{LH} = 100, \sigma_{HL} = 100, \sigma_{HH} = 150$	35.46	84.23
$\sigma_{LL} = 100, \sigma_{LH} = 300, \sigma_{HL} = 300, \sigma_{HH} = 150$	36.80	87.86
$\sigma_{LL} = 100, \sigma_{LH} = 200, \sigma_{HL} = 200, \sigma_{HH} = 100$	36.65	87.26
$\sigma_{LL} = 100, \sigma_{LH} = 200, \sigma_{HL} = 200, \sigma_{HH} = 200$	37.66	88.87
ours	38.15	90.00

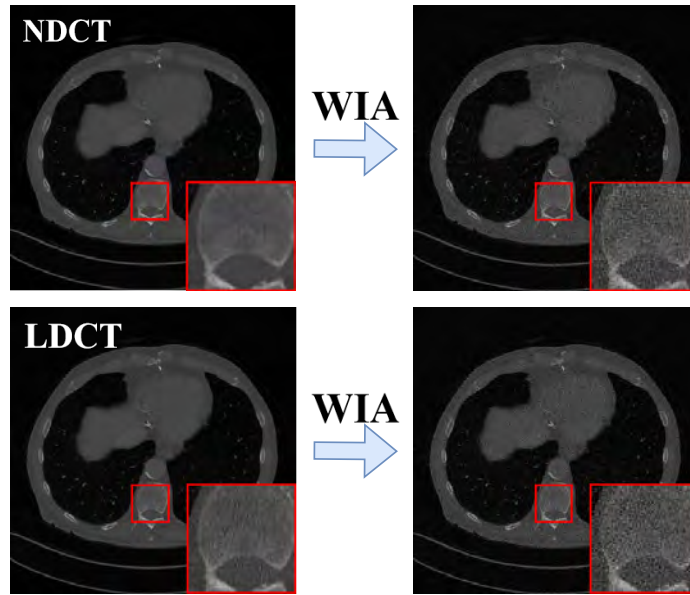


Fig. 1. Visualization of the results for LDCT and NDCT after applying WIA.