

Supplementary Materials

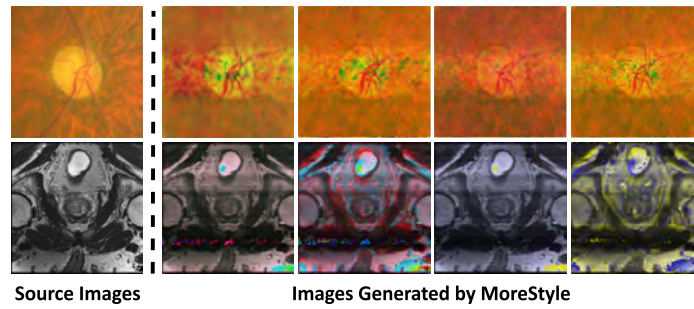


Fig. 1. Illustration of style-augmented images generated by the proposed MoreStyle.

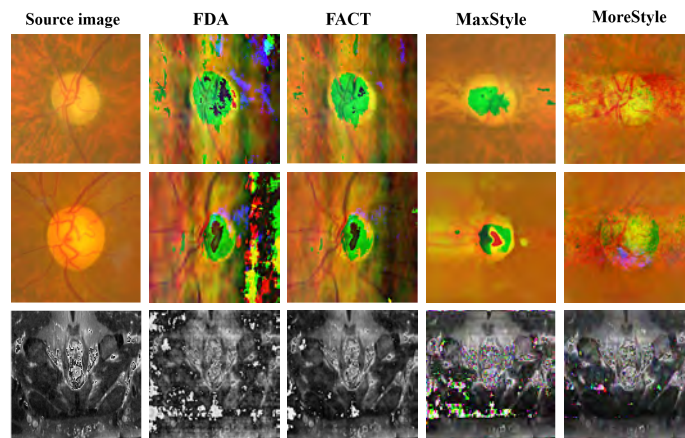


Fig. 2. Qualitative comparison of style-augmented images generated by FDA, FACT, MaxStyle and proposed MoreStyle. Due to the single-channel nature of the prostate images, for a better visualization, we create color images by overlaying three generated images into RGB channel.

Table 1. Ablation study on the impact of λ_1 , λ_2 and λ_3 in Eq. 4, ρ and σ in Sec. 2.3 and number of mix layers on RIGA+. We set λ_1 to 5×10^{-3} , ρ to 0.8, σ to 1.2 and number of layers to 3 in our paper. The best result is **bold**.

| Method | BinRushed | | Magrabia | |
|--|--------------|--------------|--------------|--------------|
| | OC | OD | OC | OD |
| $\lambda_1 = 5 \times 10^{-2}$ | 94.57 | 77.96 | 92.80 | 80.42 |
| $\lambda_1 = 5 \times 10^{-3}$ | 96.10 | 86.91 | 95.29 | 87.13 |
| $\lambda_1 = 5 \times 10^{-4}$ | 94.06 | 80.81 | 93.00 | 82.57 |
| $\lambda_2 = 5 \times 10^{-4}, \lambda_3 = 5 \times 10^{-5}$ | 90.76 | 74.63 | 89.67 | 74.81 |
| $\lambda_2 = 5 \times 10^{-5}, \lambda_3 = 5 \times 10^{-6}$ | 96.10 | 86.91 | 95.29 | 87.13 |
| $\lambda_2 = 5 \times 10^{-6}, \lambda_3 = 5 \times 10^{-7}$ | 92.93 | 77.82 | 85.59 | 78.15 |
| $\rho=0.5, \sigma=2$ | 94.37 | 83.61 | 92.61 | 81.64 |
| $\rho=0.8, \sigma=1.2$ | 96.10 | 86.91 | 95.29 | 87.13 |
| $\rho=1, \sigma=1$ | 95.89 | 86.67 | 94.94 | 85.87 |
| Number of layers =2 | 92.78 | 82.83 | 92.79 | 79.96 |
| Number of layers =3 | 96.10 | 86.91 | 95.29 | 87.13 |
| Number of layers =4 | 94.51 | 82.84 | 93.68 | 84.08 |