

On predicting 3D bone locations inside the human body - Supplementary Material

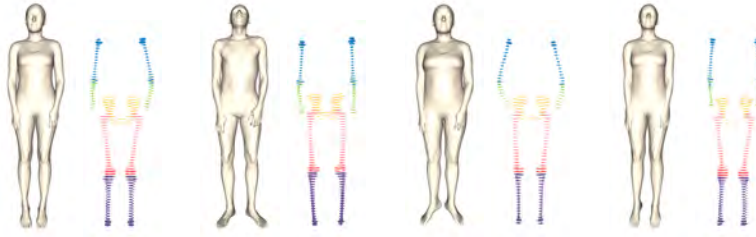


Fig. 1: The 4 subjects scanned in supine pose. The SMPL fit (in white) to the skin, and the segmented individual bones.

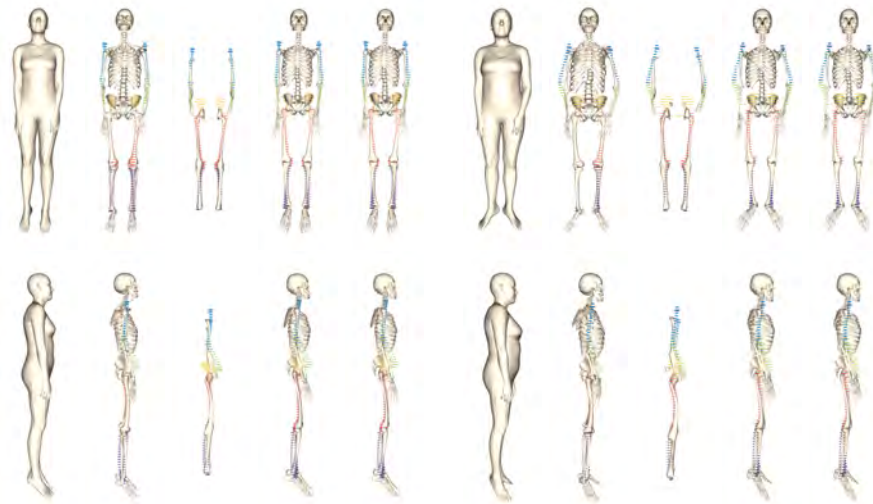


Fig. 2: From left to right: SMPL input in supine position, then the predictions by OSSO, HIT, SKEL and SKEL-J. Top: frontal view. Bottom: lateral view.

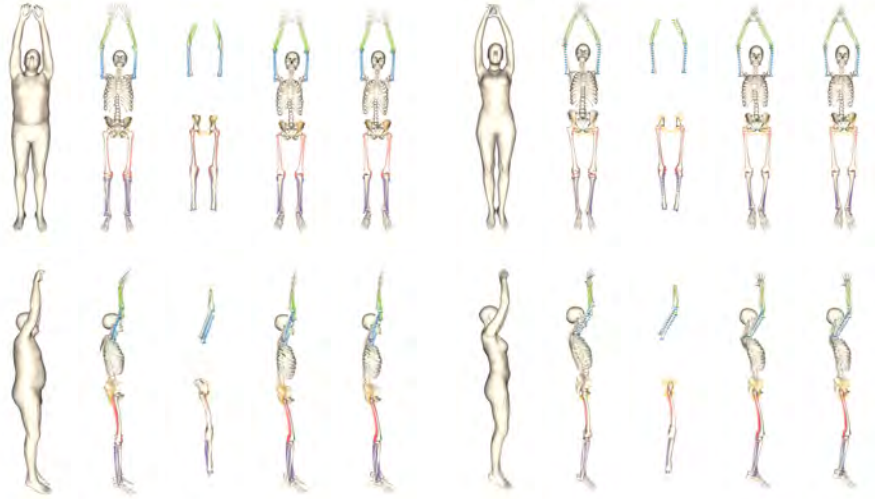


Fig. 3: For two subjects, from left to right: SMPL input, then the predictions by OSSO, HIT, SKEL and SKEL-J. Top: frontal view. Bottom: lateral view.

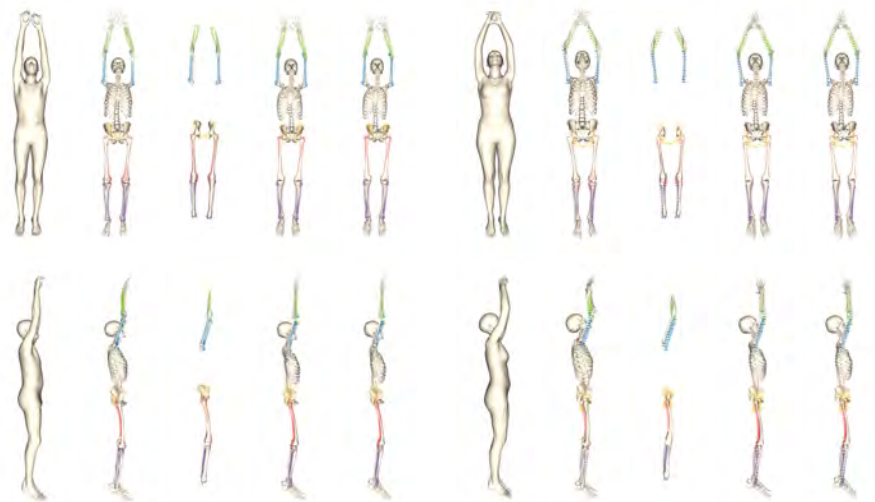


Fig. 4: For two subjects, from left to right: SMPL input, then the predictions by OSSO, HIT, SKEL and SKEL-J. Top: frontal view. Bottom: lateral view.