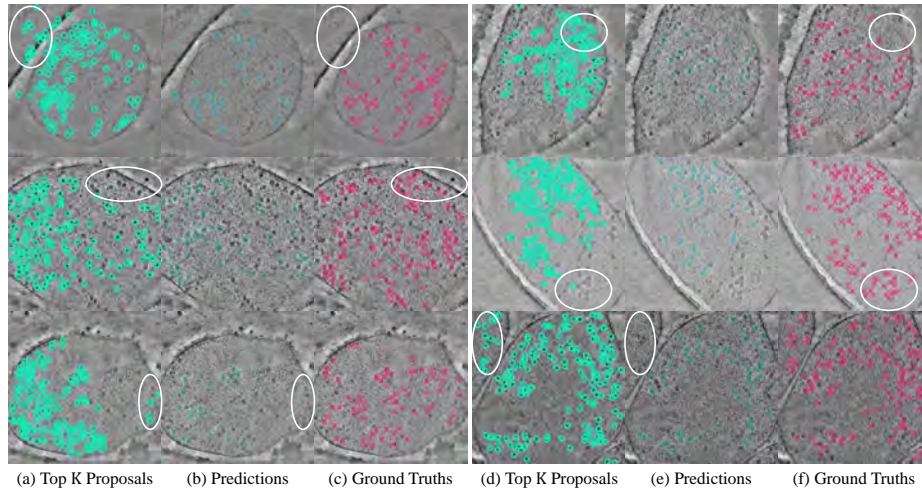
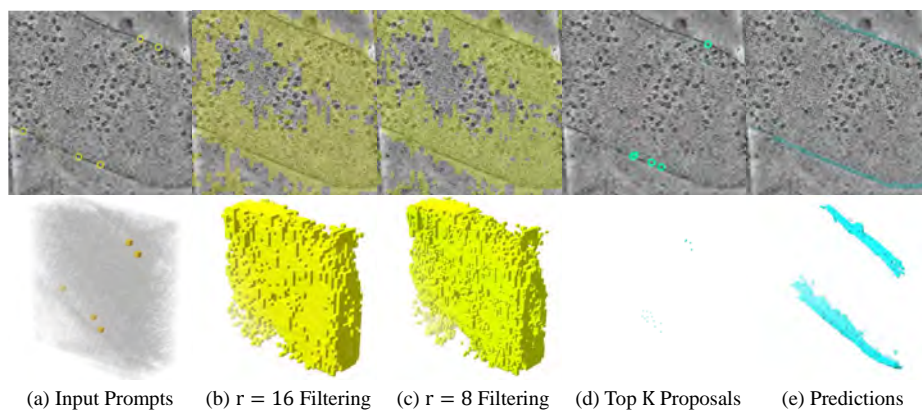


# CryoSAM: Training-free CryoET Tomogram Segmentation with Foundation Models

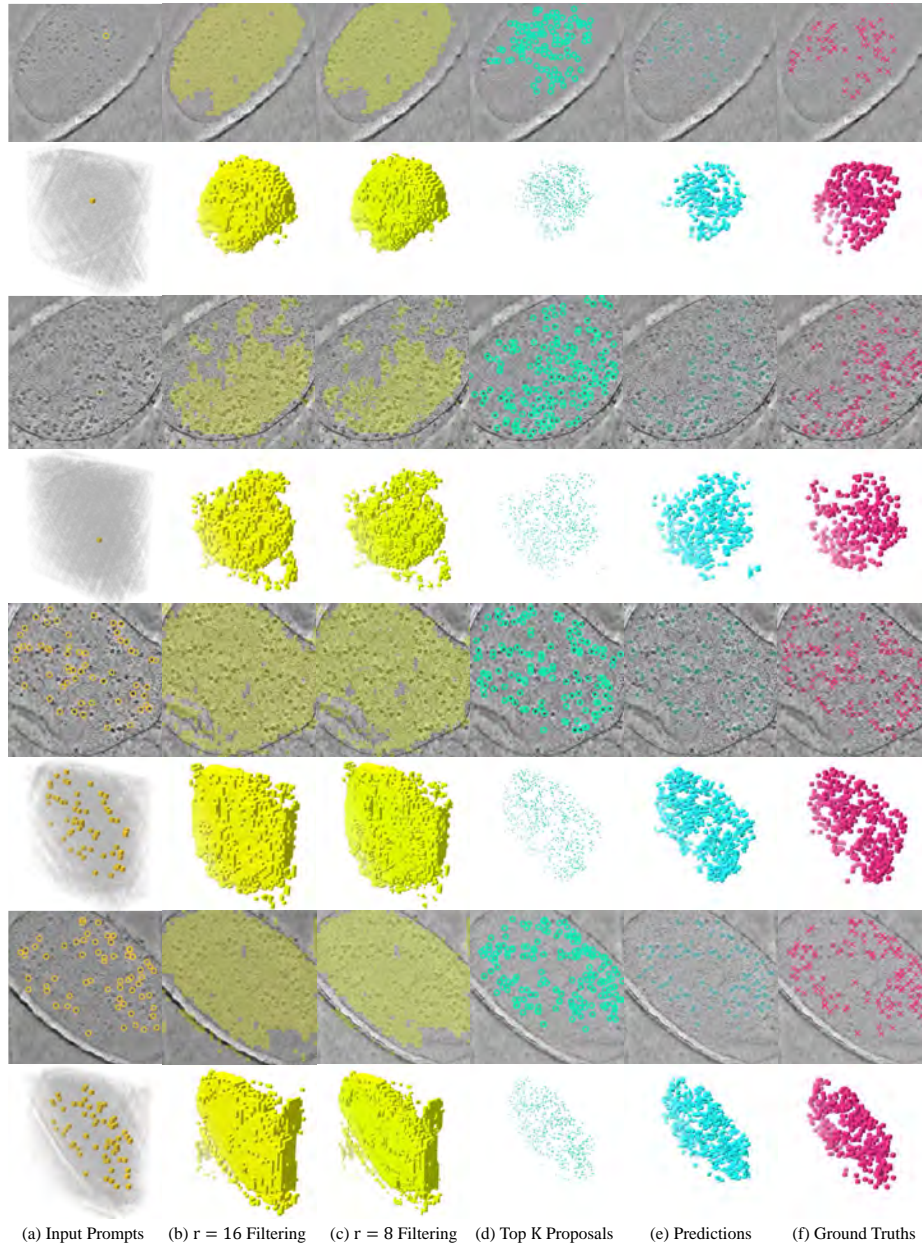
Supplementary Material



**Fig. 1. Failure cases of CryoSAM.** 1st row: False Positive in proposed prompts. 2nd row: False Negative in proposed prompts. 3rd row: False Negative in final predictions.



**Fig. 2. Intermediate and final predictions of CryoSAM for membrane segmentation.** CryoSAM can segment membranes with sparse prompt inputs.



**Fig. 3. Intermediate and final predictions of CryoSAM for particle picking.** We provide additional results for feeding CryoSAM with both single-point prompts and multiple-point prompts. In columns (a), (d), and (f), we show points with coordinates ranging from  $z - 20$  to  $z + 20$  for demonstration, where  $z$  is the coordinate of the visualized tomogram slice.