

1 Visual Comparison Between Different Methods

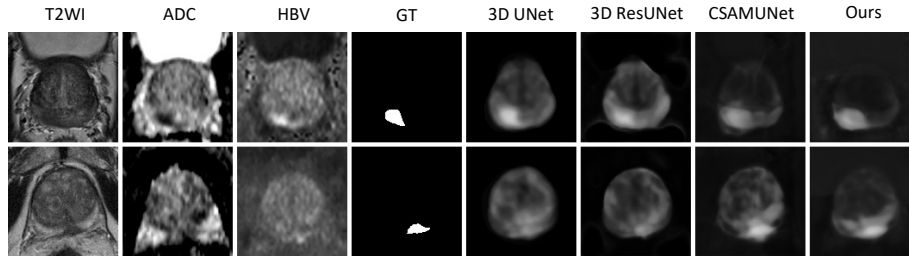


Fig. 1: Visual comparison between different methods, where our method appears to be able to detect the lesion while having less false positives.

2 Visual Comparison of Different Uncertainty Estimation

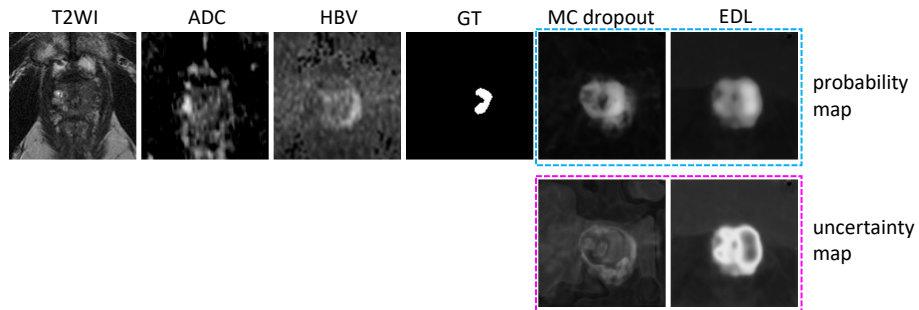


Fig. 2: Visual comparison between our EDL-based method and MC dropout-based method, where both methods are able to detect the lesion while having some false positives. However, our EDL-based method has high uncertainty values at the false positives, while the uncertainty at the false positives are low in MC dropout-based method. This indicates that our uncertainty maps is able to provide information regarding whether the prediction is accurate.