

Supplementary of “SHAN: Shape Guided Network for Thyroid Nodule Ultrasound Cross-Domain Segmentation”

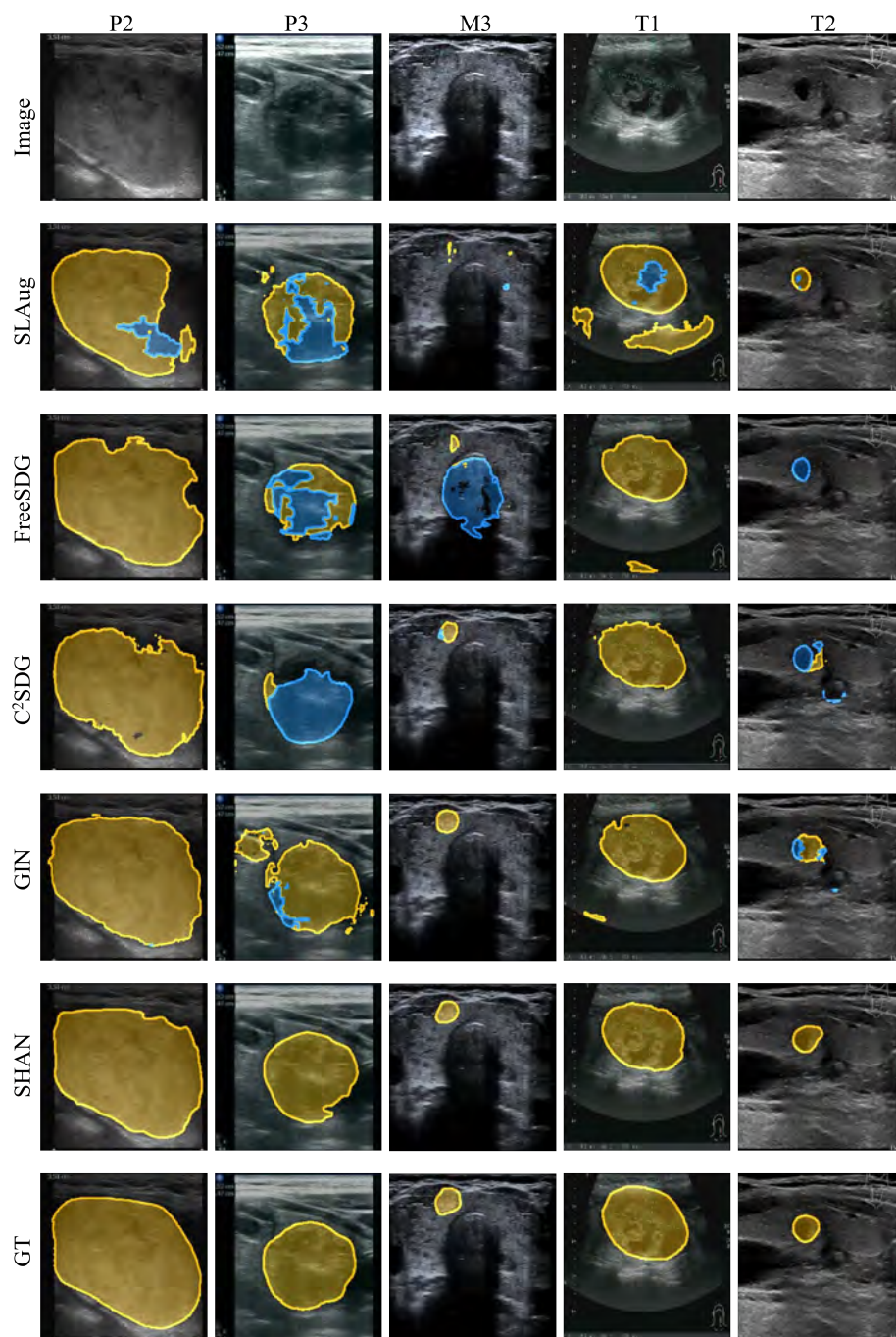


Fig. 1. The benign nodule segmentation visualization results of SHAN on 5 target domains in TUI dataset. The yellow represents the benign pixel prediction. The Blue represents the malignant pixel prediction.

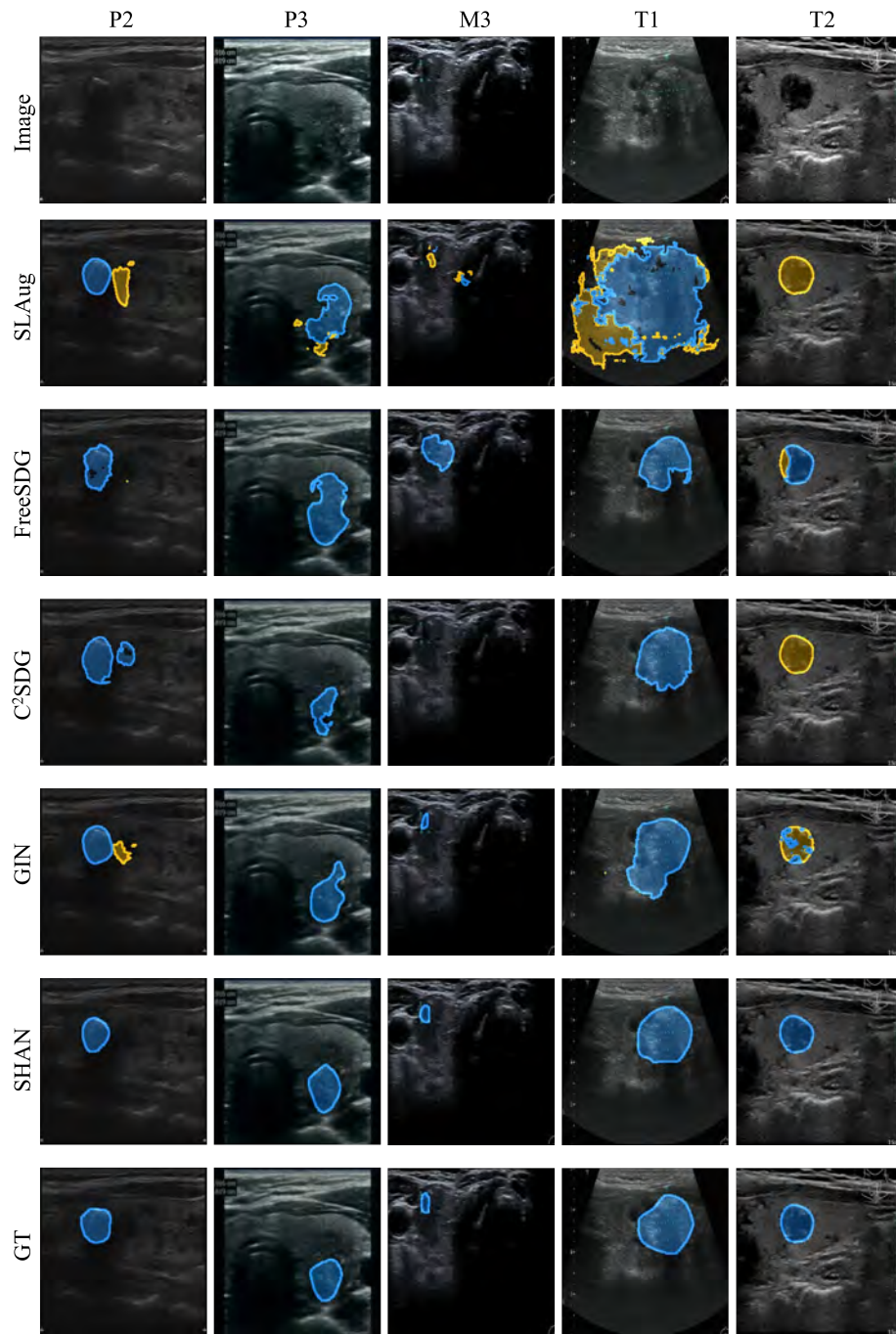


Fig. 2. The malignant nodule segmentation visualization results of SHAN on 5 target domains in TUI dataset. The yellow represents the benign pixel prediction. The Blue represents the malignant pixel prediction.