

# Towards a Benchmark for Colorectal Cancer Segmentation in Endorectal Ultrasound Videos: Dataset and Model Development

## Supplementary Material

Yuncheng Jiang<sup>1,2,3,4†</sup>, Yiwen Hu<sup>1,2†</sup>, Zixun Zhang<sup>1,2,3†</sup>, Jun Wei<sup>1,2</sup>, Chun-Mei Feng<sup>3</sup>, Xuemei Tang<sup>5</sup>, Xiang Wan<sup>4</sup>, Yong Liu<sup>3</sup>, Shuguang Cui<sup>1,2</sup>, and Zhen Li<sup>1,2✉</sup>

<sup>1</sup> SSE, The Chinese University of Hong Kong, Shenzhen, China

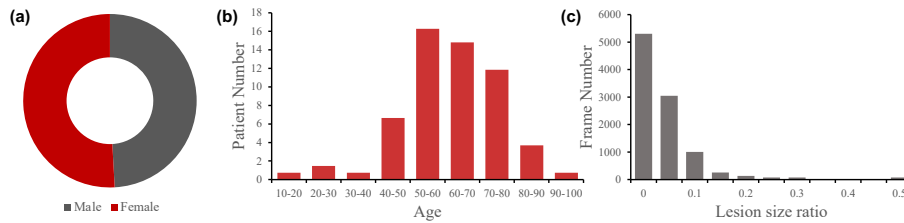
<sup>2</sup> Shenzhen Future Network of Intelligence Insitute (FNii), China

<sup>3</sup> Institute of High Performance Computing, Agency for Science, Technology and Research (A\*STAR), Singapore

<sup>4</sup> Shenzhen Research Institute of Big Data (SRIBD), Shenzhen, China

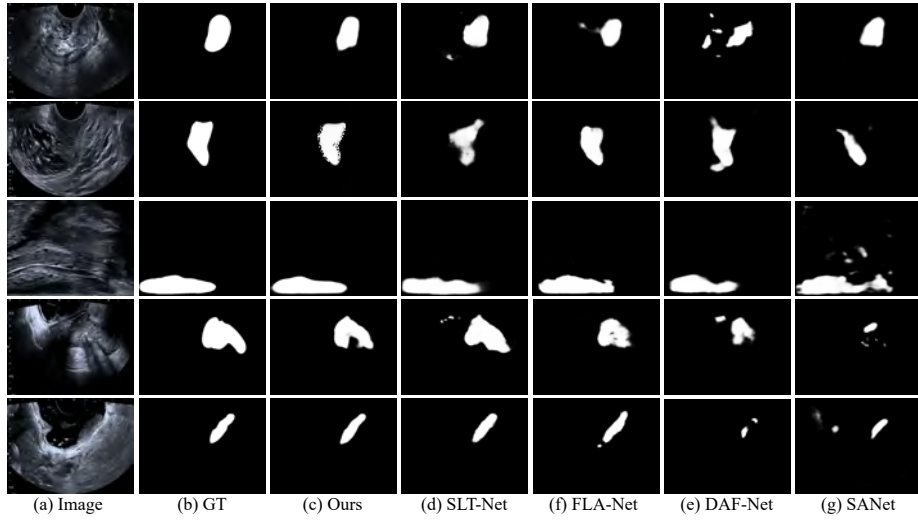
<sup>5</sup> Affiliated Hospital of North Sichuan Medical College, Sichuan, China

yunchengjiang@link.cuhk.edu.cn, lizhen@cuhk.edu.cn

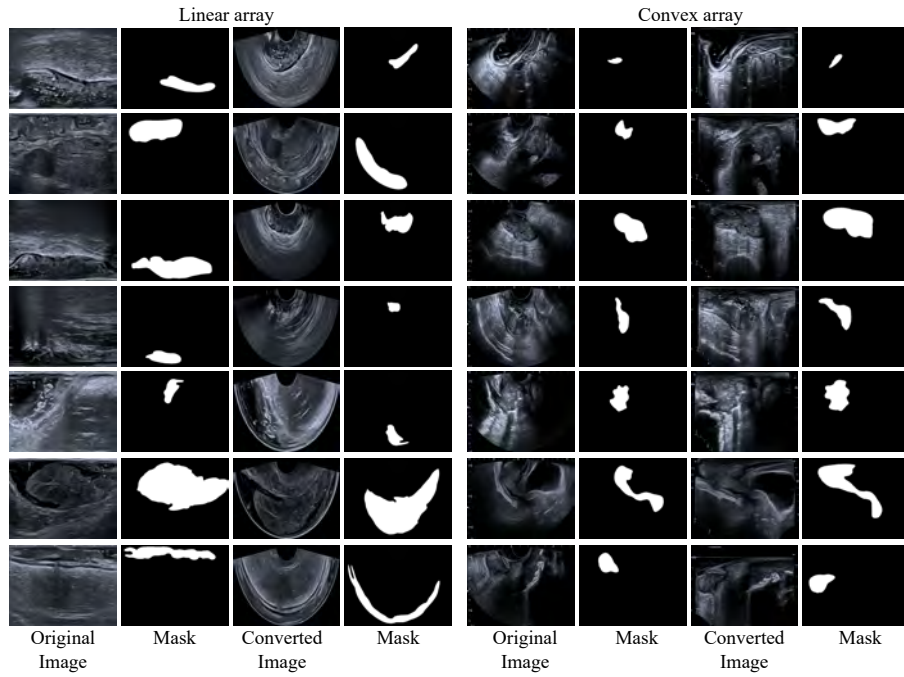


**Fig. 1.** Dataset statistic. (a) Gender distribution. (b) Age distribution. (c) Lesion size distribution.

<sup>†</sup> Equal contributions.



**Fig. 2.** More samples of qualitative comparisons.



**Fig. 3.** Sample images augmented by adaptive scanning mode augmentation. images of linear-array/convex-array mode are transformed to images of convex-array/linear-array mode.