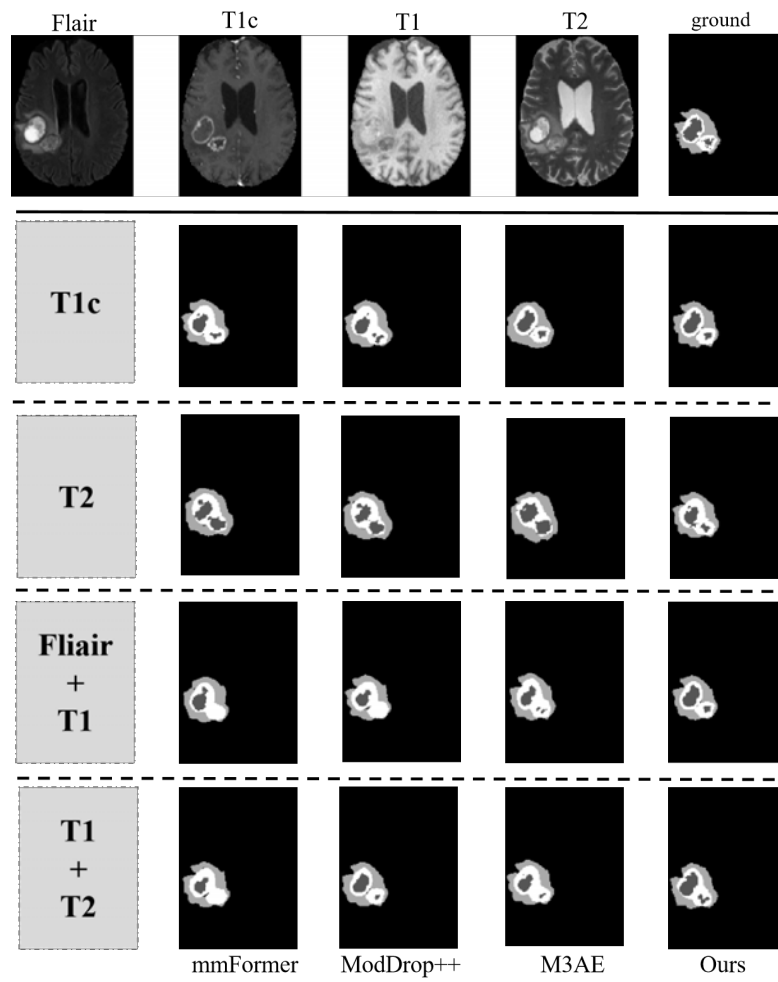


# Missing as Masking: Arbitrary Cross-modal Feature Reconstruction for Incomplete Multimodal Brain Tumor Segmentation

Zhilin Zeng<sup>1</sup>, Zelin Peng<sup>1</sup>, Xiaokang Yang<sup>1</sup>, and Wei Shen<sup>1</sup>(✉)

<sup>1</sup> MoE Key Lab of Artificial Intelligence, AI Institute,  
Shanghai Jiao Tong University, Shanghai, China.  
[wei.shen@sjtu.edu.cn](mailto:wei.shen@sjtu.edu.cn)



**Fig. 1.** Visualization of brain tumor segmentation results given different types of modality-incomplete data as input.